



GATEWAY TABLES

PRICE BOOK



Effective: 04/01/26

Rev. B 05/05/26



METAL FINISHES

Designer White (DW)	French Vanilla (FV)	Frappe (FE)	Moscato (MO)	Chinchilla (CA)
Scattered Nickel (SN)	Medium Tone (MT)	Manatee (MR)	Silver (SV)	Titanium (TM)
Graphite (GE)	Black (BL)	Black Wrinkle (BK)	Bougie Gold (BG)	Champagne (CE)
Caramel Latte (CL)	Oiled Brass (OB)	Medium Bronze (MB)	Dark Bronze (DK)	Copper (CP)
Pumpkin Spice (PS)	Cinnamon Coffee (CC)	Gingerbread (GD)	Quiet Green (QG)	Forest Green (FG)
Juniper (JR)	Night Waves (NW)	Ridge Blue (RB)	Blue Eyes (BE)	Cloudy Day (CD)
Sunshine Yellow (SY)	School Bus Yellow (SB)	Flag Orange (FO)	Flag Red (FR)	Cherry Red (CR)
Amethyst (AT)	Peacock (PK)	Blue Bird (BB)	Destroyer Blue (DB)	

HIGH PRESSURE LAMINATE (HPL) & EDGE FINISHES

Designer White WA# D354-60	Bianco Alaska Fenix #J0030 Add 20% upcharge	Handspun Pearl WA# 5033-38	Alabaster WA #D431-60	Waxed Maple Formica #8905-58
Dove Grey WA #D92-60	Handspun Dove WA #5034-38	Hartley Walnut WA #17017K-67	Neutral Twill Formica #8826-58	Swede Rift Oak Formica #8676-26
Grigio Antrim Fenix #J0752 Add 20% upcharge	Otter Formica #3202-58	Handspun Chestnut WA #5036-38	Woolen Cloth Formica #8682-58	Ivory Birch WA #8219-38
Cumberland Walnut WA #17016K-67	Castoro Ottawa Fenix #J0717 Add 20% upcharge	Luxe Mango Formica #8685-NG	Florence Walnut WA #7993-38	Grigio Londra Fenix #J0718 Add 20% upcharge
Ice Mist WA 5045K-15	Patine Bronze Formica #3707-ML	Buff Elm Formica # 5793-NG	Camel Elm Formica #5795-NG	Slate Grey WA D91-60
Ebony Recon WA 7997-38	Handspun Slate WA 5035-38	Black WA 909-58	Nero Ingo Fenix #J0720 Add 20% upcharge	Jubilee Oak WA 8242-38
Kensington Maple WA 10776-60	Veranda Teak WA 58209K-28	NeoWalnut WA 7991-38	Mangalore Mango WA 7984-38	Phantom Charcoal WA 8214K-28
Walnut Heights WA 7965K-12	Verde Comodor Fenix #J0750 Add 20% upcharge	Elemental Concrete Formica #8830-58	Kingwood Walnut WA 8218-38	Blu Fes Fenix #J0754 Add 20% upcharge

TO ORDER, SPECIFY:

1 List Model Code with the color code

- B Black
- S Silver
- W White

2 List the AV Plate code, if applicable:

- 0 Blank Plate to Cover Hole (+10/ea)
- 1 2 Data Jacks (+180/ea)
- 21 2 Data Jacks and 1 HDMI (+380/ea)
- 24 1 HDMI (+220/ea)
- 25 2 HDMI (+420/ea)
- 48 1 Data Jacks and 1 HDMI (+300/ea)

3 List the Location Code of your boxes

- PbL Left/Middle Edge
- PaL Center Edge
- PcL Right/Middle Edge

- PeL Left/Middle Center
- PdL Center of table
- PfL Right/Middle Center

Use edge mounted location s to mount into Coby Apron Tables Only

- PjL Apron edge mounted – lower left
- PkL Apron edge mounted – lower center
- PmL Apron edge mounted – lower right
- PnL Apron edge mounted – right short end

- PrL Apron edge mounted – upper left
- PpL Apron edge mounted – upper center
- PoL Apron edge mounted – upper right
- Psl Apron edge mounted – left short end

4 List the Qty and Length of Starter Cables

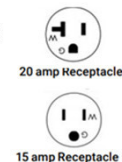
- PSTS72F 72" Starter (+\$270/ea.)
Note: 20AMP to 15AMP adapter included

- PSTS96F 96" Starter (+\$390/ea.)
Note: 20AMP to 15AMP adapter included
Note: Consists of a two-part cable (PSTS7F + DAISYFM-24)

- PSTS120F 120" Starter (+\$430/ea.)
Note: 20AMP to 15AMP adapter included
Note: Consists of a two-part cable (PSTS7F + DAISYFM-48)

5 List the Qty and Length of Starter Cal

- PUR-72 72" Starter (+\$650/ea.)
- PUR-108 108" Starter (+\$660/ea.)
- PUR-120 120" Starter (+\$670/ea.)
- PUR-132 132" Starter (+\$680/ea.)
- PUR-144 144" Starter (+\$690/ea.)



- Charm Power**
- Includes loop clamps for under table wire management.
 - 15A/120V AC Receptacles
 - Convenience Outlet
 - Cord Pass throughs
 - Cord Length: 72"



- Cove Power**
- Includes loop clamps for under table wire management.
 - Linking cables included
 - 15A/120V AC Spill-Resistant
 - Cord Length: 108"
 - 60 Watt 180° Cord – 90° Plug
 - Can link up to 8 units



- Slick Power**
- Includes loop clamps for under table wire management.
 - Linking cables included
 - Size: 2.3" x 6" long x 1.81 high
 - 2 – 15A, 120V AC Power Outlets
 - Cord Length: 120"
 - Can link up to 8 units



- Volt Power**
- Includes loop clamps for under table wire management.
 - Linking cables included
 - Outer Pan included (PV-Pan)
 - 20A/120V AC Receptacles
 - Link Up-to 3 Units



- Zing Power**
- Includes loop clamps for under table wire management.
 - Linking cables included
 - Size: 5" x 7" x 1.57" high pop-up
 - Gas Strut Open/Close
 - Meets UL Spill Requirements
 - Cord Length: 120"
 - Can link up to 8 units

	# OF OUTLETS	# OF USB-A	# OF USB-C	# OF AV PLATES	MODEL CODE	LIST PRICE
Charm Non-Linking	2			1	PCM2S-1-2-3	500
Charm Non-Linking	2	2		1	PCM2USBS-1-2-3	700
Charm Hardwired	2			1	PCM2H-1-2-3	560
Charm Hardwired	2	2		1	PCM2USBH-1-2-3	770
Cove Non-Linking	2	-	-	-	PC-1-108-3	400
Cove Non-Linking	2	1	1	-	PC2-1-108-3	600
Cove Non-Linking	2	1	1	1	PC3-1-108-2-3	600
Cove Non-Linking	4	1	1	1	PC4-1-108-2-3	770
Cove Linking	2	-	-	-	PCL-1-3-4	540
Cove Linking	2	1	1	-	PCL2-1-3-4	740
Cove Linking	2	1	1	1	PCL3-1-2-3-4	740
Cove Linking	4	1	1	1	PCL4-1-2-3-4	1,040

4 If ordering linking units, a starter infeed cable is required and ordered separately. If ordering multiple linking units, jumpers come standard, and the lengths are determined by Hi5.

Slick Non-Linking	2	1	1	-	PSLPUL-1-120	450
Slick Linking	2	1	1	-	PSLLPUL-1-12-5	560

5 If ordering linking units, a starter infeed cable is required and ordered separately. If ordering multiple linking units, jumpers come standard, and the lengths are determined by Hi5.

Volt Linking	6	2	-	1	PV-1-2-3-4	3,340
--------------	---	---	---	---	------------	-------

4 If ordering linking units, a starter infeed cable is required and ordered separately. If ordering multiple linking units, jumpers come standard, and the lengths are determined by Hi5.

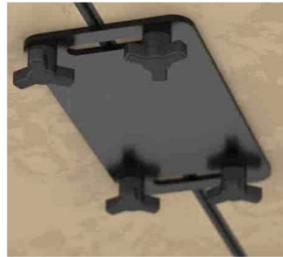
Zing Non-Linking	2	1	1	-	PZIPUL-1-120	590
Zing Linking	2	1	1	-	PZLPUL-1-12-3-5	810

5 If ordering linking units, a starter infeed cable is required and ordered separately. If ordering multiple linking units, jumpers come standard, and the lengths are determined by Hi5.

QR — Leveling Table Gangers

Category: Table Connection

- QR — Quick Release Leveling gangers (+\$300/set)



CODE WITH LOCATION

- QR.A — Leveling Table Gangers location A (+\$ 300/table)
- QR.B — Leveling Table Gangers location B (+\$ 300/table)
- QR.C — Leveling Table Gangers location A+B (+\$ 600/table)

Location Code: A=short edges B=Long edges C=Both A+B

Specifications:

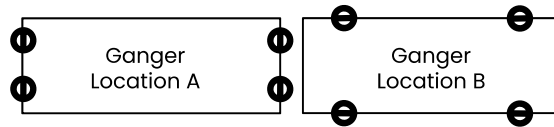
- 3" x 6" x 11GA steel plates
- Adjustable leveling

Installation:

- Inserts factory installed
- Plate field installed

Restrictions:

- Not for knife edge, solid surface or quartz



TG — Table Gangers

Category: Table Connection

- TG — Table Gangers (+\$200/set)



CODE WITH LOCATION

- TG.A — Table Gangers location A (+\$ 200/table)
- TG.B — Table Gangers location B (+\$ 200/table)
- TG.C — Table Gangers location A+B (+\$ 400/table)

Location Code: A=short edges B=Long edges C=Both A+B

Specifications:

- Simply twist and lock in place.
- Factory installed.

Restrictions:

- Not for knife edge / wood edge
- Not for solid surface or quartz

G (B/S) — Grommet

Category: Cable Management



- GB / GS — Grommet Black/Silver (+\$40/ea)

CODE WITH LOCATION

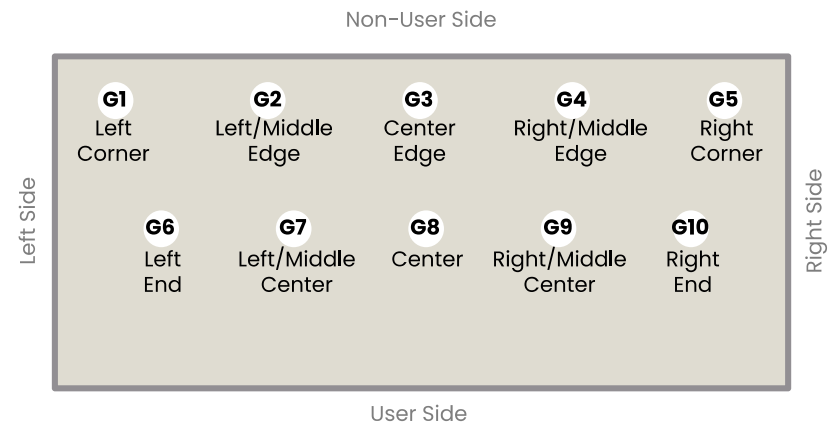
- G1B — Black Grommet. Left Corner non-user side. (+\$ 40/ea)
- G1S — Silver Grommet. Left Corner non-user side. (+\$ 40/ea)
- G2B — Black Grommet. Left / Middle Edge non-user side. (+\$ 40/ea)
- G2S — Silver Grommet. Left / Middle Edge non-user side. (+\$ 40/ea)
- G3B — Black Grommet. Center Edge non-user side. (+\$ 40/ea)
- G3S — Silver Grommet. Center Edge non-user side. (+\$ 40/ea)
- G4B — Black Grommet. Right / Middle Edge non-user side. (+\$ 40/ea)
- G4S — Silver Grommet. Right / Middle Edge non-user side. (+\$ 40/ea)
- G5B — Black Grommet. Right Corner non-user side. (+\$ 40/ea)
- G5S — Silver Grommet. Right Corner non-user side. (+\$ 40/ea)
- G6B — Black Grommet. Left End (+\$ 40/ea)
- G6S — Silver Grommet. Left End (+\$ 40/ea)
- G7B — Black Grommet. Left / Middle Center (+\$ 40/ea)
- G7S — Silver Grommet. Left / Middle Center (+\$ 40/ea)
- G8B — Black Grommet. Center (+\$ 40/ea)
- G8S — Silver Grommet. Center (+\$ 40/ea)
- G9B — Black Grommet. Right / Middle Center (+\$ 40/ea)
- G9S — Silver Grommet. Right / Middle Center (+\$ 40/ea)
- G10B — Black Grommet. Right End (+\$ 40/ea)
- G10S — Silver Grommet. Right End (+\$ 40/ea)

Specifications:

- 3" round plastic grommet
- Factory cut / field installed

Restrictions:

- Power cannot go in G6, G7, G8, G9, G10 on Beam Nesting tables or tables with legs located directly under the power box.



WB — Cable Base with Holes

Category: Cable Management

- WB — Wire manager base with holes (+\$ 100/ea)

Specifications:

- 1.5" x 2.5" openings
- Vertical cable routing

Compatibility: Coby Apron, Coby Post, Supreme, Trestle



WMAG — Magnetic Wire Manager

Category: Cable Management

- WMAG — Magnetic Wire Manager 17"L (+\$100/ea)
- WMAG.15 — Magnetic Wire Manager 15"L (+\$220/ea)
- WMAG.30 — Magnetic Wire Manager 30"L (+\$390/ea)
- WMAG.32 — Magnetic Wire Manager 32"L (+\$420/ea)

Specifications:

- Magnetic 1" x 2" steel channel
- Open slot to accommodate any cable.
- Recommended for square or rectangular bases only



Variants:

- WMAG.15 (15") Compatibility: Convene 29"H, Venue
- WMAG.17 (17") Compatibility: Convene, Coby Post, Empire, Jewel, NIM, ZuZu Tables.
- WMAG.30 (30") Compatibility: Provision
- WMAG.32 (32") Compatibility: Convene Bar Height

Finishes: Matches the table bases.

WLOOP — Loop Clamps

Category: Cable Management

- WLOOP — Loop clamps (+\$20/set)

Specifications:

- Set of 4 cable clamps and screws



WMC2.3 — Snap-On Wire Manager

Category: Cable Management

- WMC2.2B — Black Snap on vertical wire manager for T, TT and X4 Gateway bases (+\$ 100/ea)
- WMC2.2S — Silver Snap on vertical wire manager for T, TT and X4 Gateway bases (+\$ 100/ea)

Specifications:

- 17.75" length
- Snap-on steel cover

Compatibility: Gateway

Finishes: Black or Silver



WT — Steel Cable Trough

Category: Cable Management

- WT — Steel Horizontal Wire Trough (+\$500/ea)

Specifications:

- 12" x 34" x 6"
- Steel construction



Compatibility: Due to knee clearance under the tabletop, this option is recommended on 48"W and 60" wide tables

WPP — Powered Island Base

Category: Power Integration

- WPP — Power base pass through (+\$300/ea)

Specifications:

- Internal power housing
- Clearance: 7.5" W x 10" L x 3" H
- Cable exit routing



Compatibility: Round and Square tables with center column

APU — Apron to Accept Power

Category: Power Integration

- APU — Power Apron
Available upon customer request. Price based on length and power requirements

Specifications:

- 3.25" high steel apron beam
- 12GA steel construction
- Designed to house power modules

Compatibility: Union Tables

Finishes: Powder coat (standard)



FA — Floor Anchored Bracket

Category: Safety / Anchoring

- FA — Floor anchor brackets (+\$200/table)
18" wide tables in 36" & 42"H include floor anchors

Specifications:

- Steel bracket for floor anchoring
- Hardware not included

Recommended Use:

- Due to potential tipping hazards, floor anchors are recommended on tables 18" wide and taller than 30"



M2 - PAGODA Pattern

Speedway control tower inspiration
Layered architectural geometry reflecting race control structures. Creates rhythm and visual balance with moderate openness.

Compatibility: Modesty panels for Coby Post, Empire, Gateway, Jewel, NIM, Supreme, and ZuZu Tables

Gather: Home Base, Illustrate, In the Round, Perimeter



Modesty Panel: M2

M3 - TREAD Pattern

Tire performance and grip
Directional pattern inspired by tire tread; communicates motion, traction, and durability with a bold, linear aesthetic.

Compatibility: Modesty panels for Coby Post, Empire, Gateway, Jewel, NIM, Supreme, and ZuZu Tables

Gather: Home Base, Illustrate, In the Round, Perimeter



Modesty Panel: M3

M4 - RACETRACK Pattern

Oval track geometry
Rounded perforations echo continuous track curves. Smooth and flowing, balancing structure with approachability.

Compatibility: Modesty panels for Coby Post, Empire, Gateway, Jewel, NIM, Supreme, and ZuZu Tables

Gather: Home Base, Illustrate, In the Round, Perimeter



Modesty Panel: M4



Jewel
Model: J2 XXXX.M2

In The Round
Model: GRIN2

Home Base
Model: GRHO2



Jewel In The Round
Model: J2 XXXX.M3

Home Base
Model: GRIN3

Model: GRHO3



Jewel
Model: J2 XXXX.M4

In The Round
Model: GRIN4

Home Base
Model: GRHO4



Perimeter
Model: GRPE W2



Illustrate PET Panels
Model: GRIL W2



Perimeter
Model: GRPE W3



Illustrate PET Panels
Model: GRIL W3



Perimeter
Model: GRPE W4



Illustrate PET Panels
Model: GRIL W4

M1 – CROSSING Pattern

Track striping and lane markers
Clean horizontal slot pattern; minimal and modern.
Captures the precision of raceway markings while providing subtle privacy and consistent airflow.



M5 – BRICKYARD Pattern

Historic Indianapolis racing surface
Stacked rectangular pattern referencing the "Yard of Bricks."
Grounded, structured, and heritage-driven.



M6 – FINISH LINE Pattern

Timing marks and race completion
Segmented dash pattern inspired by finish line markings.
Rhythmic and directional, suggesting speed and progression.



LASER-CUT METAL MODESTY PANELS SPECS

Product Overview

Laser-cut metal modesty panels designed to provide privacy, airflow, and visual interest across workstation and table applications. Precision-cut patterns combined with durable powder-coated finishes create a balance of performance and architectural aesthetics.

Compatibility: Modesty panels for Coby Post, Empire, Gateway, NIM, Supreme, and ZuZu Tables

General Specifications

- Material : Cold-rolled steel
- Thickness: 18GA laser-cut patterns
- Deburred edges for safety
- Powder coated
- Undersurface mounted
- Standard Height: 9"

Functionality:

- Seated privacy
- Airflow through perforation
- Cable concealment

Modesty Panels:

- M148 – Crossing 45.5"L (+\$350)
- M160 – Crossing 57.5"L (+\$400)
- M172 – Crossing 69.5"L (+\$450)

- M248 – Pagoda 45.5"L (+\$350)
- M260 – Pagoda 57.5"L (+\$400)
- M272 – Pagoda 69.5"L (+\$450)

- M348 – Tread 45.5"L (+\$350)
- M360 – Tread 57.5"L (+\$400)
- M372 – Tread 69.5"L (+\$450)

- M448 – Racetrack 45.5"L (+\$350)
- M460 – Racetrack 57.5"L (+\$400)
- M472 – Racetrack 69.5"L (+\$450)

- M548 – Brickyard 45.5"L (+\$350)
- M560 – Brickyard 57.5"L (+\$400)
- M572 – Brickyard 69.5"L (+\$450)

- M648 –Finish Line 45.5"L (+\$350)
- M660 –Finish Line 57.5"L (+\$400)
- M672 –Finish Line 69.5"L (+\$450)

- M748 – Chevron 45.5"L (+\$350)
- M760 – Chevron 57.5"L (+\$400)
- M772 – Chevron 69.5"L (+\$450)

- M848 – Baseline 45.5"L (+\$350)
- M860 – Baseline 57.5"L (+\$400)
- M872 – Baseline 69.5"L (+\$450)

- M948 – Lattice 45.5"L (+\$350)
- M960 – Lattice 57.5"L (+\$400)
- M972 – Lattice 69.5"L (+\$450)

- M1048 – Pulse 45.5"L (+\$350)
- M1060 – Pulse 57.5"L (+\$400)
- M1072 – Pulse 69.5"L (+\$450)

NIM nesting table

Modesty Panels:

- M148N – Crossing 38.5"L (+\$350/ea)
- M160N – Crossing 50.5"L (+\$400/ea)
- M172N – Crossing 62.5"L (+\$ 450/ea)

- M248N – Pagoda 38.5"L (+\$350/ea)
- M260N – Pagoda 50.5"L (+\$400/ea)
- M272N – Pagoda 62.5"L (+\$ 450/ea)

- M348N – Tread 38.5"L (+\$350/ea)
- M360N – Tread 50.5"L (+\$400/ea)
- M372N – Tread 62.5"L (+\$ 450/ea)

- M448N – Racetrack 38.5"L (+\$350/ea)
- M460N – Racetrack 50.5"L (+\$400/ea)
- M472N – Racetrack 62.5"L (+\$ 450/ea)

- M548N – Brickyard 38.5"L (+\$350/ea)
- M560N – Brickyard 50.5"L (+\$400/ea)
- M572N – Brickyard 62.5"L (+\$ 450/ea)

- M648N –Finish Line 38.5"L (+\$350/ea)
- M660N –Finish Line 50.5"L (+\$400/ea)
- M672N – Finish Line 62.5"L (+\$ 450/ea)

M7 – CHEVRON

Directional track cues
Classic V-pattern; bold and architectural. Strong directional flow with balanced openness.



M8 – BASELINE

Technical track measurement
Linear, measured geometry; calm and intentional.
Emphasizes precision and control.



M9 – LATTICE

Grandstand structural systems
Open repeating geometry; engineered and lightweight.
Suggests structure with transparency.



M10 – PULSE

Speed and telemetry rhythm
Dynamic, flowing pattern representing motion cadence.
Energetic yet controlled visual movement.



STANDARD LEVELER SPECS:

Levelers come standard as listed below.

LVLR-2 for Soft & Hard Floors

Leveler, 3/8-16 x 1" stem, 1-3/8" nickel plated base with white HDPE bottom.

Compatibility: Coby Apron; Coby Post; NIM; Trestle; Union; ZuZu



LVLR-2F for Hard Floors

Available upon custom request (\$12/ea)
Leveler, 3/8-16 x 1" stem, 1-3/8" nylon base with wool felt bottom.

Compatibility: Save as LVLR-2



LVLR-4 for Soft & Hard Floors

Leveler, 5/16-18 x .5" threaded stem. 2.5 black nylon base

Compatibility: Arlington



LVLR-6 for Soft & Hard Floors

Leveler, 3/8-16 x 1/2" stem, 1-3/8" nickel plated base with white HDPE bottom.

Compatibility: Empire; Island; Jewel



Gateway Leveler for Soft Floors

1 1/16" dia. nickel base with 5/16-18 x 1/2" stem

Compatibility: Gateway



SUPREME CASTERS

Each table includes all locking casters.

CSTR-1 for Soft Floors

Caster, 50mm (1.95") dia. twin urethane hard wheel with 3/8-16 x .75" threaded stem with wheel lock. 2.385" overall ht.



CSTR-1-CSH for Hard Floors

Caster, 50mm (1.95") dia. twin urethane (soft) wheel with 3/8-16 x 1.00" threaded stem with wheel lock. 2.385" overall ht.

GATHER, ZUZU, JEWEL CASTERS

Each product or table includes two locking and two non-locking casters.

Caster for soft and hard floors:

CSTR-9.NL and CSTR-9.LK

Specifications:

- 3" twin wheel in RAL7001 color with bolt hole.
- 2-7/8" overall height Nylon and steel with dark gray soft polyurethane tread.



Compatibility: Atmosphere; Convene; Hang Out; Home Base; In The Round; Provision; Jewel; ZuZu

GATHER CASTERS

Caster for soft and hard floors:

CSTR-10.NL and CSTR-10.LK

Specifications:

- Each product includes two locking and two non-locking casters.
- 5" swivel 125mm wheel in RAL7001 color with bolt hole.
- 6.34" overall height. Nylon and steel with dark gray soft polyurethane tread
- Load capacity (dynamic) 220 lbs. Load capacity (static) 440 lbs.



Compatibility: Perimeter; Illustrate; Venue;

ARLINGTON CASTERS

Each table includes two locking and two non-locking casters.

CSTR-3 — Non-Locking caster for soft & hard floors

Caster black non-locking 1.47" (37mm) twin wheel with 5/16-18 x 5/8" threaded stem. 1.8125" overall ht.



CSTR-3.LK — Locking caster for soft & hard floors

Caster black locking 1.47" (37mm) twin wheel with 5/16-18 x 5/8" threaded stem. 1.8125" overall ht.

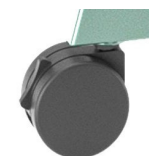


NIM CASTERS

Each table includes all locking casters.

CSTR-2 for Soft Floors

Locking caster, 2.36" twin wheel with 3/8-16 x 1" threaded stem.



CSTR-2-CSH for Hard Floors

Locking caster, 2.36" twin wheel with 3/8-16 x 1" threaded stem. For Hard Floors.



EMPIRE CASTERS

Each table includes all locking casters.

CSTR-1-STEM for Soft Floors

Locking Caster 50mm (1.95") dia. twin wheel with 3/8-16 x .5" threaded stem. 2.385" overall ht.



CSTR-1-CSH-STEM — for Hard Floors

Caster, 50mm (1.95") dia. twin urethane with 3/8-16 x .50" threaded stem with wheel lock. 2.385" overall ht.



GATEWAY CASTERS

Each table includes all locking casters.

CSTR.GY.LCS — 2" caster for soft floors

Caster, 50mm (2") dia. hard hooded wheel with 5/16-18 unc 1/2" threaded stem with wheel lock. 56.5mm overall ht.



CSTR.GY.SLC3 — 3" caster for soft floors

Caster, 75mm (3") dia. hard wheel with 3/8-16 unc x 1/2" threaded stem with wheel lock. 83mm overall ht.

(Note: Non-Nesting TT bases use a 5/16 stem)

Industrial Locking Casters

Each table includes all locking casters.

Caster for soft and hard floors:

- CSI — Industrial Casters (+\$400/table)

Specifications:

- Designed for both hard & soft floors
- 4" dia. grey polyurethane wheel
- 5" overall height
- 1/2"-13 x 1.5" threaded stem
- Ball bearing construction
- Load capacity: 300 lbs. per caster



Compatibility: Coby Apron, Coby Post, Union

LECTERNS & CREDENZAS



L	W	H	Case good	Description	Model Code	List Price
30	20	42	Lectern	Hi5 ZuZu HPL Lectern 30x20x42H	ZU.L302042	3,000
36	20	42	Lectern	Hi5 ZuZu HPL Lectern 36x20x42H	ZU.L362042	3,200

ZuZu™ Lectern Specifications:

- 20" x 36" or 20" x 30" worksurface
- 42" overall height
- Steel frame construction
- Laminate panels and top
- Smooth, quiet-rolling casters



L	W	H	Case good	Description	Model Code	List Price
54	24	30	Credenza 3-door	Hi5 ZuZu HPL 3-door Credenza 54x24x30H	ZU.C542430	5,800
54	24	36	Credenza 3-door	Hi5 ZuZu HPL 3-door Credenza 54x24x36H	ZU.C542436	6,400
72	24	30	Credenza 4-door	Hi5 ZuZu HPL 4-door Credenza 72x24x30H	ZU.C722430	6,800
72	24	36	Credenza 4-door	Hi5 ZuZu HPL 4-door Credenza 72x24x36H	ZU.C722436	7,500

ZuZu™ Credenza Specifications:

- Steel frame construction
- Laminate doors and top
- Clean touch-latch operation
- Grain runs vertically on doors
- Grain runs horizontally on the top and back



L	W	H	Case good	Description	Model Code	L3 Price
60	20	42	Rectangle	Hi5 ZuZu HPL Perch Table 60x20x42H	ZU.LS602042	6,000

ZuZu™ Perch Tables Specifications:

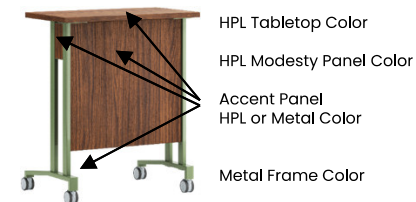
- Steel frame construction
- Two-sided HPL modesty panels



OPTIONS (add in alphabetical order)

ORDERING INSTRUCTIONS

1. List Model Code
2. Add options alphabetically & location codes
3. Specify finishes
4. List quantity of each item



FOLDING CARTS



L	W	H	Size w/tables	Table Shape	Description	Model Code	List
28	81	37		Rectangle	Folding cart for 60L/72L Rectangle Tables - 28x81x37H Cart weighs 85lbs. Flat stacks 6 tables: 18x60, 18x72, 24x60, 24x72 Side stacked 4 tables: 30x48, 30x60, 36x48, 36x60 Side stacked 5 tables: 30x72, 36x72	FC-72RE.H	3,200
28	93	37		Rectangle	Folding cart for 84L Rectangle Tables - 28x93x37H Flat stacks 6 tables: 18x84, 24x84 Side stacked 5 tables: 30x84, 36x84	FC-84RE.H	3,350
28	105	37		Rectangle	Folding cart for 96L Rectangle Tables - 28x105x37H Flat stacks 6 tables: 18x96, 24x96 Side stacked 5 tables: 30x96, 36x96	FC-96RE.H	3,500

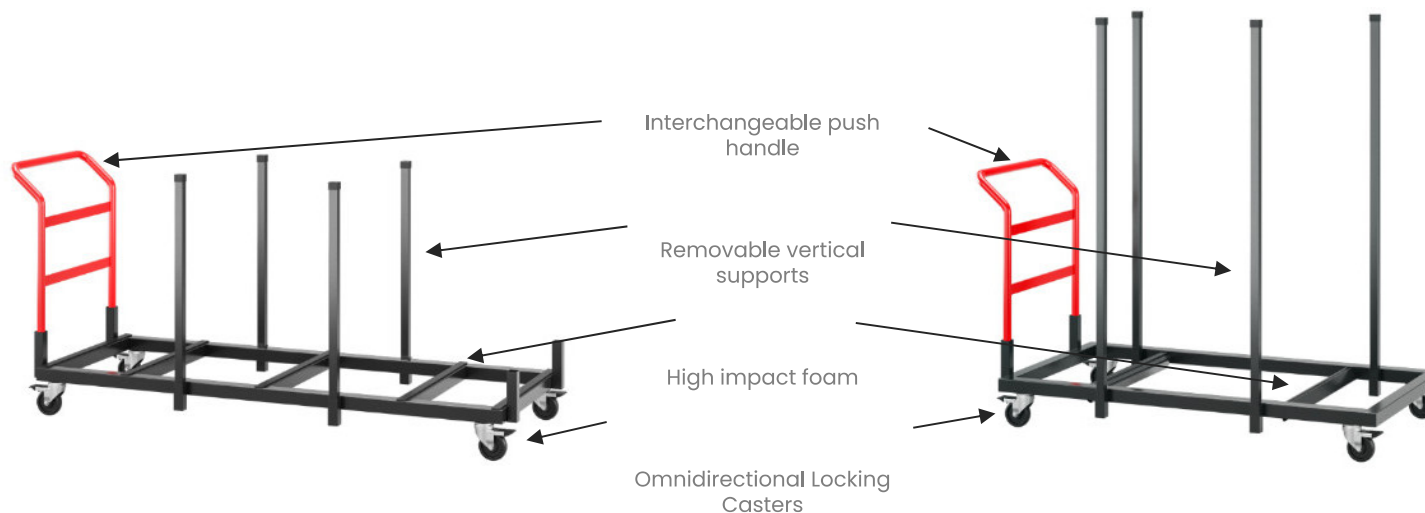


31	67	39	33"x78"x49"H	Round	Folding cart for 48D Round Tables - 31x67x39H Holds 4 side stacked round tables. Accommodates 48" and 60" round tables	FC-48RD.H	3,300
33	67	64	33"x67"x64"H	Round	Folding cart for 60D Round Tables - 33x67x64H Cart weighs 82lbs. Holds 4 side stacked 72" round tables.	FC-60RD.H	3,400
33	67	64	33"x78"x73"H	Round	Folding cart for 72D Round Tables - 33x67x64H Holds 4 side stacked 60" square tables.	FC-72RD.H	3,500

Specifications:

All sizes are nominal sizes.

- 1,000 lbs. capacity
- Removable vertical supports
- Interchangeable push handle for pushing cart from either end
- Casters are locking omnidirectional for maneuvering small spaces.
- Cart stays in place while loading.
- Closed cell high impact foam to protect table surfaces and edges
- The frame is constructed of 2" x 2" x 14ga square tubular carbon ASTM-A513 steel





36" Round x 29"H
Model: GY.XS3629RD



36" Round x 29"H (Nesting on Casters)
Model: GY.XN3629RD



60" Round x 29"H (Nesting on Casters)
Model: GY.T2N6029RD



72" Round x 29"H (Nesting on Casters)
Model: GY.T2N7229RD



36" Square x 29"H
Model: GY.XS363629SQ



36" Square x 29"H (Nesting on Casters)
Model: GY.XN363629SQ



Folding 60" Round x 29"H
Model: GY.T2F6029RD
(Carts sold separately)



Folding 72"L x 30"W x 29"H
Model: GY.TF307229
(Carts sold separately)



Crescent 60"L x 30"W x 29"H
Model: GY.TS306029CR



Trapezoid 60"L x 24"W x 29"H
Model: GY.TS246029TZ



Half Round 72"L x 36"W x 29"H
Model: GY.TS367229 HR



Rectangle 72"L x 30"W x 29"H
Model: GY.TN307229



Rectangle 96"L x 48"W x 29"H (Nesting on Casters)
Model: GY.T2N489629



Rectangle 96"L x 48"W x 29"H (Nesting on Casters)
Model: GY.T2N489629



OPTIONS (add in alphabetical order)

L	W	H	Shape	Function	Bases	Description	Model Code	L3 Price
48	24	29	Crescent		2)T22/2	Hi5 Gateway HPL Crescent table - 48x24x29H	GY.TS244829CR.L3	2,400
48	24	29	Crescent	Nest	2)T22/2	Hi5 Gateway HPL Crescent Nest table - 48x24x29H	GY.TN244829CR.L3	3,180
60	30	29	Crescent		2)T26/2	Hi5 Gateway HPL Crescent table - 60x30x29H	GY.TS306029CR.L3	3,270
60	30	29	Crescent	Nest	2)T26/2	Hi5 Gateway HPL Crescent Nest table - 60x30x29H	GY.TN306029CR.L3	4,050
48	24	29	Half Round		2)T18/2	Hi5 Gateway HPL Half Round table - 48x24x29H	GY.TS244829HR.L3	1,510
48	24	29	Half Round	Nest	2)T18/2	Hi5 Gateway HPL Half Round Nest table - 48x24x29H	GY.TN244829HR.L3	2,550
60	30	29	Half Round		2)T22/2	Hi5 Gateway HPL Half Round table - 60x30x29H	GY.TS306029HR.L3	1,910
60	30	29	Half Round	Nest	2)T22/2	Hi5 Gateway HPL Half Round Nest table - 60x30x29H	GY.TN306029HR.L3	2,950
72	36	29	Half Round		2)T26/2	Hi5 Gateway HPL Half Round table - 72x36x29H	GY.TS367229HR.L3	2,370
72	36	29	Half Round	Nest	2)T26/2	Hi5 Gateway HPL Half Round Nest table - 72x36x29H	GY.TN367229HR.L3	3,600
60	24	29	Trapezoid		2)T22/2	Hi5 Gateway HPL Trapezoid table - 60x24x29H	GY.TS246029TZ.L3	1,680
60	24	29	Trapezoid	Nest	2)T22/2	Hi5 Gateway HPL Trapezoid Nest table - 60x24x29H	GY.TN246029TZ.L3	2,720
60	30	29	Trapezoid		2)T22/2	Hi5 Gateway HPL Trapezoid table - 60x30x29H	GY.TS306029TZ.L3	1,910
60	30	29	Trapezoid	Nest	2)T22/2	Hi5 Gateway HPL Trapezoid Nest table - 60x30x29H	GY.TN306029TZ.L3	2,950
72	24	29	Trapezoid		2)T22/2	Hi5 Gateway HPL Trapezoid table - 72x24x29H	GY.TS247229TZ.L3	1,850
72	24	29	Trapezoid	Nest	2)T22/2	Hi5 Gateway HPL Trapezoid Nest table - 72x24x29H	GY.TN247229TZ.L3	2,890
72	30	29	Trapezoid		2)T22/2	Hi5 Gateway HPL Trapezoid table - 72x30x29H	GY.TS307229TZ.L3	2,120
72	30	29	Trapezoid	Nest	2)T22/2	Hi5 Gateway HPL Trapezoid Nest table - 72x30x29H	GY.TN307229TZ.L3	3,160

- CS – Casters Soft Floors (+\$200/table)
- CSH – Casters Hard Floors (+\$200/table)
See Caster and Leveler Specs, p. 13
Nesting tables include casters for soft floors
- GB / GS – Grommet Black/Silver (+\$40/ea)
See location choices: p. 7
- QR – Quick Release Leveling gangers (+\$300/set)
Location Code: A = short edges B = Long edges
See location choices: p. 7
- TG – Table Gangers (+\$200/set)
Location Code: A = short edges B = Long edges
See location choices: p. 7
- WMC2B/S – Snap on vertical wire manager for T, TT and x4 Gateway bases (+\$100/ea)

SPECIFICATIONS/NOTES
Handles & Base Configurations

- Beam nesting tables with T bases include 1 handle
- Beam nesting tables with TT bases include 2 handles
- Tables 60" and longer include 2 handles
- Tabletops over 120" are two-piece
- Power units cannot be placed at the table center (interferes with beam nesting system)
- Nesting tables include casters for soft floors
- TT nesting tables include 3" locking casters
- See Caster and Leveler Specifications (p. 13)
- Folding carts are sold separately
- Magnetic wire managers match base finish
- Special sizes and heights are available
- 36"H tables are priced the same as 42"H tables

GENERAL STRUCTURAL SUPPORT GUIDELINES

- Tables 36" x 72" and larger require TT bases
- Maximum span between legs is 56"; additional legs required beyond this distance
- Maximum distance from end of table to the first leg: 12" up to 36"D tables and 18" up to 60"D tables
- Legs may be inset from table ends as an alternative to anti-sag bars
- Base footprint should be 70-80% of tabletop width (freestanding tables)
- Standard top thickness: 1.25"
- High Pressure Laminate (HPL)
- Tables over 120" are manufactured in two pieces; grain will not match as this is laminate.
- Minimum knee clearance: 27" height
- Minimum knee depth clearance: 12"-15"

STANDARD FINISHES
Laminate Finish: Hi5 standard colors
Edge Finish: Hi5 standard colors
Base Finish: Hi5 standard colors

ORDERING INSTRUCTIONS

1. List Model Code
2. Add options alphabetically & location codes
3. Specify finishes
4. List quantity of each item

GATEWAY TABLES

FINISHES (pp.3-4) | POWER (pp.5-6) | ACCESSORIES + OPTIONS (pp.7-11) | MODESTY PANELS (pp.9-10) | PLANTS (p.12) | LECTERNS & CREDENZAS (p.14) | FOLDING CARTS (p.15)



Folding (Carts sold Separately)



TT Style Nesting Bases



PVC L3

OPTIONS (add in alphabetical order)

- CS – Casters Soft Floors (+\$200/table)
- CSH – Casters Hard Floors (+\$200/table)
- See Caster and Leveler Specs, p. 13
- Nesting tables include casters for soft floors
- GB / GS – Grommet Black/Silver (+\$40/ea)
- See location choices: p. 7
- QR – Quick Release Leveling gangers (+\$300/set)
- Location Code: A = short edges B = Long edges
- See location choices: p. 7
- TG – Table Gangers (+\$200/set)
- Location Code: A = short edges B = Long edges
- See location choices: p. 7
- WMC2B/S – Snap on vertical wire manager for T, TT and X4 Gateway bases (+\$100/ea)

MODESTY PANEL CHOICES

- M148 – Crossing 45.5”L (+\$350)
- M248 – Pagoda 45.5”L (+\$350)
- M348 – Tread 45.5”L (+\$350)
- M448 – Racetrack 45.5”L (+\$350)
- M548 – Brickyard 45.5”L (+\$350)
- M648 – Finish Line 45.5”L (+\$350)
- M748 – Chevron 45.5”L (+\$350)
- M848 – Baseline 45.5”L (+\$350)
- M948 – Lattice 45.5”L (+\$350)
- M1048 – Pulse 45.5”L (+\$350)

SPECIFICATIONS/NOTES

- Handles & Base Configurations
- Beam nesting tables with T bases include 1 handle
 - Beam nesting tables with TT bases include 2 handles
 - Tables 60” and longer include 2 handles
 - Power units cannot be placed at the table center (interferes with beam nesting system)
 - Nesting tables include casters for soft floors
 - TT nesting tables include 3” locking casters
 - See Caster and Leveler Specifications (p. 13)
 - Folding carts are sold separately
 - Magnetic wire managers match base finish
 - Special sizes and heights are available
 - 36”H tables are priced the same as 42”H tables

GENERAL STRUCTURAL SUPPORT GUIDELINES

- Tables 36” x 72” and larger require TT bases
- Maximum span between legs is 56”; additional legs required beyond this distance
- Maximum distance from end of table to the first leg: 12” up to 36”D tables and 18” up to 60”D tables
- Legs may be inset from table ends as an alternative to anti-sag bars
- Base footprint should be 70–80% of tabletop width (freestanding tables)
- Standard top thickness: 1.25”
- High Pressure Laminate (HPL)
- Tables over 120” are manufactured in two pieces; grain will not match as this is laminate.
- Minimum knee clearance: 27” height
- Minimum knee depth clearance: 12”–15”

STANDARD FINISHES

Laminate Finish: Hi5 standard colors
 Edge Finish: Hi5 standard colors
 Base Finish: Hi5 standard colors

ORDERING INSTRUCTIONS

1. List Model Code
2. Add options alphabetically & location codes
3. Specify finishes
4. List quantity of each item

L	W	H	Shape	Function	Bases	Description	Model Code	L3 Price
30	24	29	Rect		1)X22/3	Hi5 Gateway HPL Rect table – 30x24x29H	GY.XS243029.L3	1,520
30	24	29	Rect	Nest	1)X22/3	Hi5 Gateway HPL Rect Nest table – 30x24x29H	GY.XN243029.L3	2,120
30	24	42	Rect		1)X26/3	Hi5 Gateway HPL Rect table – 30x24x42H	GY.XS243042.L3	1,710
36	24	29	Rect		1)X26/3	Hi5 Gateway HPL Rect table – 36x24x29H	GY.XS243629.L3	1,620
36	24	29	Rect	Nest	1)X26/3	Hi5 Gateway HPL Rect Nest table – 36x24x29H	GY.XN243629.L3	2,220
36	24	42	Rect		1)X32/3	Hi5 Gateway HPL Rect table – 36x24x42H	GY.XS243642.L3	1,910
42	24	29	Rect		2)T22/2	Hi5 Gateway HPL Rect table – 42x24x29H	GY.TS244229.L3	1,580
42	24	29	Rect	Beam Nest	2)T22/2	Hi5 Gateway HPL Rect Beam Nest table – 42x24x29H	GY.TN244229.L3	2,720
42	24	42	Rect		2)T22/2	Hi5 Gateway HPL Rect table – 42x24x42H	GY.TS244242.L3	1,960
42	30	29	Rect		2)T22/2	Hi5 Gateway HPL Rect table – 42x30x29H	GY.TS304229.L3	1,750
42	30	29	Rect	Beam Nest	2)T22/2	Hi5 Gateway HPL Rect Beam Nest table – 42x30x29H	GY.TN304229.L3	2,900
42	30	42	Rect		2)T26/2	Hi5 Gateway HPL Rect table – 42x30x42H	GY.TS304242.L3	2,160
42	36	29	Rect		2)T26/2	Hi5 Gateway HPL Rect table – 42x36x29H	GY.XS364229.L3	2,740
42	36	29	Rect	Beam Nest	2)T26/2	Hi5 Gateway HPL Rect Beam Nest table – 42x36x29H	GY.TN364229.L3	3,090
42	36	42	Rect		2)T32/2	Hi5 Gateway HPL Rect table – 42x36x42H	GY.XS364242.L3	2,360
48	18	29	Rect		2)T18/2	Hi5 Gateway HPL Rect table – 48x18x29H	GY.TS184829.L3	1,480
48	18	29	Rect	Beam Nest	2)T18/2	Hi5 Gateway HPL Rect Beam Nest table – 48x18x29H	GY.TN184829.L3	2,290
48	24	29	Rect		2)T22/2	Hi5 Gateway HPL Rect table – 48x24x29H	GY.TS244829.L3	1,660
48	24	29	Rect	Beam Nest	2)T22/2	Hi5 Gateway HPL Rect Beam Nest table – 48x24x29H	GY.TN244829.L3	2,800
48	24	42	Rect		2)T22/2	Hi5 Gateway HPL Rect table – 48x24x42H	GY.TS244842.L3	2,060
48	30	29	Rect		2)T22/2	Hi5 Gateway HPL Rect table – 48x30x29H	GY.TS304829.L3	1,870
48	30	29	Rect	Beam Nest	2)T22/2	Hi5 Gateway HPL Rect Beam Nest table – 48x30x29H	GY.TN304829.L3	3,010
48	30	42	Rect		2)T26/2	Hi5 Gateway HPL Rect table – 48x30x42H	GY.TS304842.L3	2,290
48	36	29	Rect		2)T26/2	Hi5 Gateway HPL Rect table – 48x36x29H	GY.TS364829.L3	2,220
48	36	29	Rect	Beam Nest	2)T26/2	Hi5 Gateway HPL Rect Beam Nest table – 48x36x29H	GY.TN364829.L3	3,220
48	36	42	Rect		2)T32/2	Hi5 Gateway HPL Rect table – 48x36x42H	GY.TS364842.L3	2,520



L	W	H	Shape	Function	Bases	Description	Model Code	L3 Price
60	18	29	Rect		2)T18/2	Hi5 Gateway HPL Rect table - 60x18x29H	GY.TS186029.L3	1,620
60	18	29	Rect	Fold	2)T18/2	Hi5 Gateway HPL Rect Fold table - 60x18x29H	GY.TF186029.L3	2,430
60	18	29	Rect	Beam Nest	2)T18/2	Hi5 Gateway HPL Rect Beam Nest table - 60x18x29H	GY.TN186029.L3	3,010
60	24	29	Rect		2)T22/2	Hi5 Gateway HPL Rect table - 60x24x29H	GY.TS246029.L3	1,850
60	24	29	Rect	Fold	2)T22/2	Hi5 Gateway HPL Rect Fold table - 60x24x29H	GY.TF246029.L3	2,660
60	24	29	Rect	Beam Nest	2)T22/2	Hi5 Gateway HPL Rect Beam Nest table - 60x24x29H	GY.TN246029.L3	2,990
60	24	42	Rect		2)T22/2	Hi5 Gateway HPL Rect table - 60x24x42H	GY.TS246042.L3	2,270
60	30	29	Rect		2)T22/2	Hi5 Gateway HPL Rect table - 60x30x29H	GY.TS306029.L3	2,100
60	30	29	Rect	Fold	2)T22/2	Hi5 Gateway HPL Rect Fold table - 60x30x29H	GY.TF306029.L3	2,910
60	30	29	Rect	Beam Nest	2)T22/2	Hi5 Gateway HPL Rect Beam Nest table - 60x30x29H	GY.TN306029.L3	3,240
60	30	42	Rect		2)T26/2	Hi5 Gateway HPL Rect table - 60x30x42H	GY.TS306042.L3	2,550
60	30	42	Rect	Beam Nest	2)T26/2	Hi5 Gateway HPL Rect Beam Nest table - 60x30x42H	GY.TN306042.L3	3,860
60	36	29	Rect		2)T26/2	Hi5 Gateway HPL Rect table - 60x36x29H	GY.TS366029.L3	2,500
60	36	29	Rect	Fold	2)T26/2	Hi5 Gateway HPL Rect Fold table - 60x36x29H	GY.TF366029.L3	3,160
60	36	29	Rect	Beam Nest	2)T26/2	Hi5 Gateway HPL Rect Beam Nest table - 60x36x29H	GY.TN366029.L3	3,500
60	36	42	Rect		2)T32/2	Hi5 Gateway HPL Rect table - 60x36x42H	GY.TS366042.L3	2,840
60	36	42	Rect	Beam Nest	2)T32/2	Hi5 Gateway HPL Rect Beam Nest table - 60x36x42H	GY.TN366042.L3	4,150
60	42	29	Rect		2)TT32/2	Hi5 Gateway HPL Rect table - 60x42x29H	GY.T2S426029.L3	3,210
60	42	29	Rect	Fold	2)TT32/2	Hi5 Gateway HPL Rect Fold table - 60x42x29H	GY.T2F426029.L3	4,020
60	42	29	Rect	Beam Nest	2)TT32/2	Hi5 Gateway HPL Rect Beam Nest table - 60x42x29H	GY.T2N426029.L3	5,380
60	42	42	Rect		2)TT36/2	Hi5 Gateway HPL Rect table - 60x42x42H	GY.T2S426042.L3	4,280
60	42	42	Rect	Beam Nest	2)TT36/2	Hi5 Gateway HPL Rect Beam Nest table - 60x42x42H	GY.T2N426042.L3	6,260
60	48	29	Rect		2)TT36/2	Hi5 Gateway HPL Rect table - 60x48x29H	GY.T2S486029.L3	3,890
60	48	29	Rect	Fold	2)TT36/2	Hi5 Gateway HPL Rect Fold table - 60x48x29H	GY.T2F486029.L3	4,690
60	48	29	Rect	Beam Nest	2)TT36/2	Hi5 Gateway HPL Rect Beam Nest table - 60x48x29H	GY.T2N486029.L3	6,040
60	48	42	Rect		2)TT36/2	Hi5 Gateway HPL Rect table - 60x48x42H	GY.T2S486042.L3	4,520
60	48	42	Rect	Beam Nest	2)TT36/2	Hi5 Gateway HPL Rect Beam Nest table - 60x48x42H	GY.T2N486042.L3	6,500

OPTIONS (add in alphabetical order)

- CS – Casters Soft Floors (+\$200/table)
- CSH – Casters Hard Floors (+\$200/table)
- See Caster and Leveler Specs, p. 13
- Nesting tables include casters for soft floors
- GB / GS – Grommet Black/Silver (+\$40/ea)
- See location choices: p. 7
- QR – Quick Release Leveling gangers (+\$300/set)
- Location Code: A = short edges B = Long edges
- See location choices: p. 7
- TG – Table Gangers (+\$200/set)
- Location Code: A = short edges B = Long edges
- See location choices: p. 7
- WMC2B/S – Snap on vertical wire manager for T, TT and X4 Gateway bases (+\$100/ea)

MODESTY PANEL CHOICES

- M160 – Crossing 57.5"L (+\$400)
- M260 – Pagoda 57.5"L (+\$400)
- M360 – Tread 57.5"L (+\$400)
- M460 – Racetrack 57.5"L (+\$400)
- M560 – Brickyard 57.5"L (+\$400)
- M660 – Finish Line 57.5"L (+\$400)
- M760 – Chevron 57.5"L (+\$400)
- M860 – Baseline 57.5"L (+\$400)
- M960 – Lattice 57.5"L (+\$400)
- M1060 – Pulse 57.5"L (+\$400)

SPECIFICATIONS/NOTES

- Handles & Base Configurations
- Beam nesting tables with T bases include 1 handle
- Beam nesting tables with TT bases include 2 handles
- Tables 60" and longer include 2 handles
- Power units cannot be placed at the table center (interferes with beam nesting system)
- Nesting tables include casters for soft floors
- TT nesting tables include 3" locking casters
- See Caster and Leveler Specifications (p. 13)
- Folding carts are sold separately
- Magnetic wire managers match base finish
- Special sizes and heights are available
- 36"H tables are priced the same as 42"H tables

GENERAL STRUCTURAL SUPPORT GUIDELINES

- Tables 36" x 72" and larger require TT bases
- Maximum span between legs is 56"; additional legs required beyond this distance
- Maximum distance from end of table to the first leg: 12" up to 36"D tables and 18" up to 60"D tables
- Legs may be inset from table ends as an alternative to anti-sag bars
- Base footprint should be 70–80% of tabletop width (freestanding tables)
- Standard top thickness: 1.25"
- High Pressure Laminate (HPL)
- Tables over 120" are manufactured in two pieces; grain will not match as this is laminate.
- Minimum knee clearance: 27" height
- Minimum knee depth clearance: 12"–15"

STANDARD FINISHES

Laminate Finish: Hi5 standard colors
 Edge Finish: Hi5 standard colors
 Base Finish: Hi5 standard colors

ORDERING INSTRUCTIONS

1. List Model Code
2. Add options alphabetically & location codes
3. Specify finishes
4. List quantity of each item



L	W	H	Shape	Function	Bases	Description	Model Code	L3 Price
72	18	29	Rect		2)T18/2	Hi5 Gateway HPL Rect table - 72x18x29H	GY.TS187229.L3	1,750
72	18	29	Rect	Fold	2)T18/2	Hi5 Gateway HPL Rect Fold table - 72x18x29H	GY.TF187229.L3	2,560
72	18	29	Rect	Beam Nest	2)T18/2	Hi5 Gateway HPL Rect Beam Nest table - 72x18x29H	GY.TN187229.L3	3,150
72	24	29	Rect		2)T22/2	Hi5 Gateway HPL Rect table - 72x24x29H	GY.TS247229.L3	2,040
72	24	29	Rect	Fold	2)T22/2	Hi5 Gateway HPL Rect Fold table - 72x24x29H	GY.TF247229.L3	2,850
72	24	29	Rect	Beam Nest	2)T22/2	Hi5 Gateway HPL Rect Beam Nest table - 72x24x29H	GY.TN247229.L3	3,180
72	24	42	Rect		2)T22/2	Hi5 Gateway HPL Rect table - 72x24x42H	GY.TS247242.L3	2,360
72	30	29	Rect		2)T22/2	Hi5 Gateway HPL Rect table - 72x30x29H	GY.TS307229.L3	2,330
72	30	29	Rect	Fold	2)T22/2	Hi5 Gateway HPL Rect Fold table - 72x30x29H	GY.TF307229.L3	3,140
72	30	29	Rect	Beam Nest	2)T22/2	Hi5 Gateway HPL Rect Beam Nest table - 72x30x29H	GY.TN307229.L3	3,480
72	30	42	Rect		2)T26/2	Hi5 Gateway HPL Rect table - 72x30x42H	GY.TS307242.L3	2,670
72	30	42	Rect	Beam Nest	2)T26/2	Hi5 Gateway HPL Rect Beam Nest table - 72x30x42H	GY.TN307242.L3	3,980
72	36	29	Rect		2)T32/2	Hi5 Gateway HPL Rect table - 72x36x29H	GY.TS367229.L3	2,780
72	36	29	Rect	Fold	2)T32/2	Hi5 Gateway HPL Rect Fold table - 72x36x29H	GY.TF367229.L3	3,440
72	36	29	Rect	Beam Nest	2)T32/2	Hi5 Gateway HPL Rect Beam Nest table - 72x36x29H	GY.TN367229.L3	3,780
72	36	42	Rect		2)TT32/2	Hi5 Gateway HPL Rect table - 72x36x42H	GY.T2S367242.L3	4,080
72	36	42	Rect	Beam Nest	2)TT32/2	Hi5 Gateway HPL Rect Beam Nest table - 72x36x42H	GY.T2N367242.L3	6,065
72	42	29	Rect		2)TT32/2	Hi5 Gateway HPL Rect table - 72x42x29H	GY.T2S427229.L3	3,540
72	42	29	Rect	Fold	2)TT32/2	Hi5 Gateway HPL Rect Fold table - 72x42x29H	GY.T2F427229.L3	4,350
72	42	29	Rect	Beam Nest	2)TT32/2	Hi5 Gateway HPL Rect Beam Nest table - 72x42x29H	GY.T2N427229.L3	5,690
72	42	42	Rect		2)TT36/2	Hi5 Gateway HPL Rect table - 72x42x42H	GY.T2S427242.L3	4,620
72	42	42	Rect	Beam Nest	2)TT36/2	Hi5 Gateway HPL Rect Beam Nest table - 72x42x42H	GY.T2N427242.L3	6,600
72	48	29	Rect		2)TT36/2	Hi5 Gateway HPL Rect table - 72x48x29H	GY.T2S487229.L3	4,250
72	48	29	Rect	Fold	2)TT36/2	Hi5 Gateway HPL Rect Fold table - 72x48x29H	GY.T2F487229.L3	5,060
72	48	29	Rect	Beam Nest	2)TT36/2	Hi5 Gateway HPL Rect Beam Nest table - 72x48x29H	GY.T2N487229.L3	6,420
72	48	42	Rect		2)TT36/2	Hi5 Gateway HPL Rect table - 72x48x42H	GY.T2S487242.L3	4,900
72	48	42	Rect	Beam Nest	2)TT36/2	Hi5 Gateway HPL Rect Beam Nest table - 72x48x42H	GY.T2N487242.L3	6,880

OPTIONS (add in alphabetical order)

- CS – Casters Soft Floors (+\$200/table)
- CSH – Casters Hard Floors (+\$200/table)
- See Caster and Leveler Specs, p. 13
- Nesting tables include casters for soft floors
- GB / GS – Grommet Black/Silver (+\$40/ea)
- See location choices: p. 7
- QR – Quick Release Leveling gangers (+\$300/set)
- Location Code: A = short edges B = Long edges
- See location choices: p. 7
- TG – Table Gangers (+\$200/set)
- Location Code: A = short edges B = Long edges
- See location choices: p. 7
- WMC2B/S – Snap on vertical wire manager for T, TT and X4 Gateway bases (+\$100/ea)

MODESTY PANEL CHOICES

- M172 – Crossing 69.5"L (+\$450)
- M272 – Pagoda 69.5"L (+\$450)
- M372 – Tread 69.5"L (+\$450)
- M472 – Racetrack 69.5"L (+\$450)
- M572 – Brickyard 69.5"L (+\$450)
- M672 – Finish Line 69.5"L (+\$450)
- M772 – Chevron 69.5"L (+\$450)
- M872 – Baseline 69.5"L (+\$450)
- M972 – Lattice 69.5"L (+\$450)
- M1072 – Pulse 69.5"L (+\$450)

SPECIFICATIONS/NOTES

- Handles & Base Configurations
- Beam nesting tables with T bases include 1 handle
- Beam nesting tables with TT bases include 2 handles
- Tables 60" and longer include 2 handles
- Power units cannot be placed at the table center (interferes with beam nesting system)
- Nesting tables include casters for soft floors
- TT nesting tables include 3" locking casters
- See Caster and Leveler Specifications (p. 13)
- Folding carts are sold separately
- Magnetic wire managers match base finish
- Special sizes and heights are available
- 36"H tables are priced the same as 42"H tables

GENERAL STRUCTURAL SUPPORT GUIDELINES

- Tables 36" x 72" and larger require TT bases
- Maximum span between legs is 56"; additional legs required beyond this distance
- Maximum distance from end of table to the first leg: 12" up to 36"D tables and 18" up to 60"D tables
- Legs may be inset from table ends as an alternative to anti-sag bars
- Base footprint should be 70–80% of tabletop width (freestanding tables)
- Standard top thickness: 1.25"
- High Pressure Laminate (HPL)
- Tables over 120" are manufactured in two pieces; grain will not match as this is laminate.
- Minimum knee clearance: 27" height
- Minimum knee depth clearance: 12"–15"

STANDARD FINISHES

Laminate Finish: Hi5 standard colors
 Edge Finish: Hi5 standard colors
 Base Finish: Hi5 standard colors

ORDERING INSTRUCTIONS

1. List Model Code
2. Add options alphabetically & location codes
3. Specify finishes
4. List quantity of each item

GATEWAY TABLES

FINISHES (pp.3-4) | POWER (pp.5-6) | ACCESSORIES + OPTIONS (pp.7-11) | MODESTY PANELS (pp.9-10) | PLANTS (p.12) | LECTERNS & CREDENZAS (p.14) | FOLDING CARTS (p.15)



Folding (Carts sold Separately)



TT Style Nesting Bases



PVC L3

OPTIONS (add in alphabetical order)

- CS – Casters Soft Floors (+\$200/table)
- CSH – Casters Hard Floors (+\$200/table)
See Caster and Leveler Specs, p. 13
Nesting tables include casters for soft floors
- GB / GS – Grommet Black/Silver (+\$40/ea)
See location choices: p. 7
- QR – Quick Release Leveling gangers (+\$300/set)
Location Code: A = short edges B = Long edges
See location choices: p. 7
- TG – Table Gangers (+\$200/set)
Location Code: A = short edges B = Long edges
See location choices: p. 7
- WMC2B/S – Snap on vertical wire manager for T, TT and X4 Gateway bases (+\$100/ea)

SPECIFICATIONS/NOTES

- Handles & Base Configurations
- Beam nesting tables with T bases include 1 handle
 - Beam nesting tables with TT bases include 2 handles
 - Tables 60" and longer include 2 handles
 - Power units cannot be placed at the table center (interferes with beam nesting system)
 - Nesting tables include casters for soft floors
 - TT nesting tables include 3" locking casters
 - See Caster and Leveler Specifications (p. 13)
 - Folding carts are sold separately
 - Magnetic wire managers match base finish
 - Special sizes and heights are available
 - 36"H tables are priced the same as 42"H tables

GENERAL STRUCTURAL SUPPORT GUIDELINES

- Tables 36" x 72" and larger require TT bases
- Maximum span between legs is 56"; additional legs required beyond this distance
- Maximum distance from end of table to the first leg: 12" up to 36"D tables and 18" up to 60"D tables
- Legs may be inset from table ends as an alternative to anti-sag bars
- Base footprint should be 70-80% of tabletop width (freestanding tables)
- Standard top thickness: 1.25"
- High Pressure Laminate (HPL)
- Tables over 120" are manufactured in two pieces; grain will not match as this is laminate.
- Minimum knee clearance: 27" height
- Minimum knee depth clearance: 12"-15"

STANDARD FINISHES

Laminate Finish: Hi5 standard colors
Edge Finish: Hi5 standard colors
Base Finish: Hi5 standard colors

ORDERING INSTRUCTIONS

1. List Model Code
2. Add options alphabetically & location codes
3. Specify finishes
4. List quantity of each item

L	W	H	Shape	Function	Bases	Description	Model Code	L3 Price
84	18	29	Rect		3)T18/2	Hi5 Gateway HPL Rect table - 84x18x29H	GY.TS188429.L3	2,350
84	24	29	Rect		2)T22/2	Hi5 Gateway HPL Rect table - 84x24x29H	GY.TS248429.L3	2,220
84	24	29	Rect	Fold	2)T22/2	Hi5 Gateway HPL Rect Fold table - 84x24x29H	GY.TF248429.L3	3,020
84	24	29	Rect	Beam Nest	2)T22/2	Hi5 Gateway HPL Rect Beam Nest table - 84x24x29H	GY.TN248429.L3	3,610
84	24	42	Rect		2)T22/2	Hi5 Gateway HPL Rect table - 84x24x42H	GY.TS248442.L3	2,550
84	24	42	Rect	Beam Nest	2)T22/2	Hi5 Gateway HPL Rect Beam Nest table - 84x24x42H	GY.TN248442.L3	3,860
84	30	29	Rect		2)T26/2	Hi5 Gateway HPL Rect table - 84x30x29H	GY.TS308429.L3	2,560
84	30	29	Rect	Fold	2)T26/2	Hi5 Gateway HPL Rect Fold table - 84x30x29H	GY.TF308429.L3	3,370
84	30	29	Rect	Beam Nest	2)T26/2	Hi5 Gateway HPL Rect Beam Nest table - 84x30x29H	GY.TN308429.L3	3,960
84	30	42	Rect		2)T26/2	Hi5 Gateway HPL Rect table - 84x30x42H	GY.TS308442.L3	2,900
84	30	42	Rect	Beam Nest	2)T26/2	Hi5 Gateway HPL Rect Beam Nest table - 84x30x42H	GY.TN308442.L3	4,210
84	36	29	Rect		2)T32/2	Hi5 Gateway HPL Rect table - 84x36x29H	GY.TS368429.L3	2,910
84	36	29	Rect	Fold	2)TT32/2	Hi5 Gateway HPL Rect Fold table - 84x36x29H	GY.T2F368429.L3	5,160
84	36	29	Rect	Beam Nest	2)TT32/2	Hi5 Gateway HPL Rect Beam Nest table - 84x36x29H	GY.T2N368429.L3	5,690
84	36	42	Rect		2)TT32/2	Hi5 Gateway HPL Rect table - 84x36x42H	GY.T2S368442.L3	4,400
84	42	29	Rect		2)TT32/2	Hi5 Gateway HPL Rect table - 84x42x29H	GY.T2S428429.L3	3,850
84	42	29	Rect	Fold	2)TT32/2	Hi5 Gateway HPL Rect Fold table - 84x42x29H	GY.T2F428429.L3	5,470
84	42	29	Rect	Beam Nest	2)TT32/2	Hi5 Gateway HPL Rect Beam Nest table - 84x42x29H	GY.T2N428429.L3	6,020
84	42	42	Rect		2)TT36/2	Hi5 Gateway HPL Rect table - 84x42x42H	GY.T2S428442.L3	4,950
84	48	29	Rect		2)TT36/2	Hi5 Gateway HPL Rect table - 84x48x29H	GY.T2S488429.L3	4,620
84	48	29	Rect	Fold	2)TT36/2	Hi5 Gateway HPL Rect Fold table - 84x48x29H	GY.T2F488429.L3	6,240
84	48	29	Rect	Beam Nest	2)TT36/2	Hi5 Gateway HPL Rect Beam Nest table - 84x48x29H	GY.T2N488429.L3	6,780
84	48	42	Rect		2)TT36/2	Hi5 Gateway HPL Rect table - 84x48x42H	GY.T2S488442.L3	5,280



Folding (Carts sold Separately)



TT Style Nesting Bases



PVC L3

L	W	H	Shape	Function	Bases	Description	Model Code	L3 Price
96	18	29	Rect		3)T18/2	Hi5 Gateway HPL Rect table - 96x18x29H	GY.TS189629.L3	2,500
96	24	29	Rect		3)T22/2	Hi5 Gateway HPL Rect table - 96x24x29H	GY.TS249629.L3	2,870
96	24	29	Rect	Fold	2)T22/2	Hi5 Gateway HPL Rect Fold table - 96x24x29H	GY.TF249629.L3	3,210
96	24	29	Rect	Beam Nest	2)T22/2	Hi5 Gateway HPL Rect Beam Nest table - 96x24x29H	GY.TN249629.L3	3,800
96	24	42	Rect		3)T22/2	Hi5 Gateway HPL Rect table - 96x24x42H	GY.TS249642.L3	3,350
96	24	42	Rect	Beam Nest	2)T22/2	Hi5 Gateway HPL Rect Beam Nest table - 96x24x42H	GY.TN249642.L3	4,660
96	30	29	Rect		3)T26/2	Hi5 Gateway HPL Rect table - 96x30x29H	GY.TS309629.L3	3,265
96	30	29	Rect	Fold	2)T26/2	Hi5 Gateway HPL Rect Fold table - 96x30x29H	GY.TF309629.L3	3,600
96	30	29	Rect	Beam Nest	2)T26/2	Hi5 Gateway HPL Rect Beam Nest table - 96x30x29H	GY.TN309629.L3	4,190
96	30	42	Rect		3)T26/2	Hi5 Gateway HPL Rect table - 96x30x42H	GY.TS309642.L3	3,760
96	30	42	Rect	Beam Nest	2)T26/2	Hi5 Gateway HPL Rect Beam Nest table - 96x30x42H	GY.TN309642.L3	4,730
96	36	29	Rect		2)T32/2	Hi5 Gateway HPL Rect table - 96x36x29H	GY.TS369629.L3	3,190
96	36	29	Rect	Fold	2)TT32/2	Hi5 Gateway HPL Rect Fold table - 96x36x29H	GY.T2F369629.L3	5,430
96	36	29	Rect	Beam Nest	2)TT32/2	Hi5 Gateway HPL Rect Beam Nest table - 96x36x29H	GY.T2N369629.L3	5,970
96	36	42	Rect		3)TT32/2	Hi5 Gateway HPL Rect table - 96x36x42H	GY.T2S369642.L3	5,805
96	42	29	Rect		2)TT32/2	Hi5 Gateway HPL Rect table - 96x42x29H	GY.T2S964229.L3	4,180
96	42	29	Rect	Fold	2)TT32/2	Hi5 Gateway HPL Rect Fold table - 96x42x29H	GY.T2F964229.L3	5,800
96	42	29	Rect	Beam Nest	2)TT32/2	Hi5 Gateway HPL Rect Beam Nest table - 96x42x29H	GY.T2N964229.L3	6,340
96	42	42	Rect		3)TT32/2	Hi5 Gateway HPL Rect table - 96x42x42H	GY.T2S964242.L3	5,945
96	48	29	Rect		2)TT36/2	Hi5 Gateway HPL Rect table - 96x48x29H	GY.T2S489629.L3	4,990
96	48	29	Rect	Fold	2)TT36/2	Hi5 Gateway HPL Rect Fold table - 96x48x29H	GY.T2F489629.L3	6,600
96	48	29	Rect	Beam Nest	2)TT36/2	Hi5 Gateway HPL Rect Beam Nest table - 96x48x29H	GY.T2N489629.L3	7,150
96	48	42	Rect		3)TT36/2	Hi5 Gateway HPL Rect table - 96x48x42H	GY.T2S489642.L3	6,970

OPTIONS (add in alphabetical order)

- CS – Casters Soft Floors (+\$200/table)
- CSH – Casters Hard Floors (+\$200/table)
See Caster and Leveler Specs, p. 13
Nesting tables include casters for soft floors
- GB / GS – Grommet Black/Silver (+\$40/ea)
See location choices: p. 7
- QR – Quick Release Leveling gangers (+\$300/set)
Location Code: A = short edges B = Long edges
See location choices: p. 7
- TG – Table Gangers (+\$200/set)
Location Code: A = short edges B = Long edges
See location choices: p. 7
- WMC2B/S – Snap on vertical wire manager for T, TT and X4 Gateway bases (+\$100/ea)

SPECIFICATIONS/NOTES

- Handles & Base Configurations
- Beam nesting tables with T bases include 1 handle
- Beam nesting tables with TT bases include 2 handles
- Tables 60" and longer include 2 handles
- Power units cannot be placed at the table center (interferes with beam nesting system)
- Nesting tables include casters for soft floors
- TT nesting tables include 3" locking casters
- See Caster and Leveler Specifications (p. 13)
- Folding carts are sold separately
- Magnetic wire managers match base finish
- Special sizes and heights are available
- 36"H tables are priced the same as 42"H tables

GENERAL STRUCTURAL SUPPORT GUIDELINES

- Tables 36" x 72" and larger require TT bases
- Maximum span between legs is 56"; additional legs required beyond this distance
- Maximum distance from end of table to the first leg: 12" up to 36"D tables and 18" up to 60"D tables
- Legs may be inset from table ends as an alternative to anti-sag bars
- Base footprint should be 70-80% of tabletop width (freestanding tables)
- Standard top thickness: 1.25"
- High Pressure Laminate (HPL)
- Tables over 120" are manufactured in two pieces; grain will not match as this is laminate.
- Minimum knee clearance: 27" height
- Minimum knee depth clearance: 12"-15"

STANDARD FINISHES

Laminate Finish: Hi5 standard colors
Edge Finish: Hi5 standard colors
Base Finish: Hi5 standard colors

ORDERING INSTRUCTIONS

1. List Model Code
2. Add options alphabetically & location codes
3. Specify finishes
4. List quantity of each item



L	W	H	Shape	Function	Bases	Description	Model Code	L3 Price
108	18	29	Rect		3)T18/2	Hi5 Gateway HPL Rect table - 108x18x29H	GY.TS1810829.L3	2,640
108	24	29	Rect		3)T22/2	Hi5 Gateway HPL Rect table - 108x24x29H	GY.TS2410829.L3	3,050
108	24	42	Rect		3)T22/2	Hi5 Gateway HPL Rect table - 108x24x42H	GY.TS2410842.L3	3,540
108	30	29	Rect		3)T26/2	Hi5 Gateway HPL Rect table - 108x30x29H	GY.TS3010829.L3	3,500
108	30	42	Rect		3)T26/2	Hi5 Gateway HPL Rect table - 108x30x42H	GY.TS3010842.L3	4,000
108	36	29	Rect		3)TT32/2	Hi5 Gateway HPL Rect table - 108x36x29H	GY.TS3610829.L3	3,950
108	36	42	Rect		3)TT32/2	Hi5 Gateway HPL Rect table - 108x36x42H	GY.T2S3610842.L3	6,125
108	42	29	Rect		3)TT32/2	Hi5 Gateway HPL Rect table - 108x42x29H	GY.T2S4210829.L3	5,300
108	42	42	Rect		3)TT36/2	Hi5 Gateway HPL Rect table - 108x42x42H	GY.T2S4210842.L3	6,275
120	18	29	Rect		3)T18/2	Hi5 Gateway HPL Rect table - 120x18x29H	GY.TS1812029.L3	2,770
120	24	29	Rect		3)T22/2	Hi5 Gateway HPL Rect table - 120x24x29H	GY.TS2412029.L3	3,230
120	30	29	Rect		3)T26/2	Hi5 Gateway HPL Rect table - 120x30x29H	GY.TS3012029.L3	3,700
120	36	29	Rect		3)TT32/2	Hi5 Gateway HPL Rect table - 120x36x29H	GY.TS3612029.L3	4,230
120	42	29	Rect		3)TT32/2	Hi5 Gateway HPL Rect table - 120x42x29H	GY.T2S4212029.L3	5,630
120	48	29	Rect		3)TT36/2	Hi5 Gateway HPL Rect table - 120x48x29H	GY.T2S4812029.L3	6,740
132	24	29	Rect	2 piece	3)T22/2	Hi5 Gateway HPL Rect 2 piece table - 132x24x29H	GY.TS2413229.L3	3,420
132	30	29	Rect	2 piece	3)T26/2	Hi5 Gateway HPL Rect 2 piece table - 132x30x29H	GY.TS3013229.L3	3,960
132	36	29	Rect	2 piece	3)T32/2	Hi5 Gateway HPL Rect 2 piece table - 132x36x29H	GY.TS3613229.L3	4,500
132	42	29	Rect	2 piece	3)TT32/2	Hi5 Gateway HPL Rect 2 piece table - 132x42x29H	GY.T2S4213229.L3	5,950
132	48	29	Rect	2 piece	3)TT36/2	Hi5 Gateway HPL Rect 2 piece table - 132x48x29H	GY.T2S4813229.L3	7,120
144	24	29	Rect	2 piece	4)T22/2	Hi5 Gateway HPL Rect 2 piece table - 144x24x29H	GY.TS2414429.L3	4,060
144	30	29	Rect	2 piece	4)T26/2	Hi5 Gateway HPL Rect 2 piece table - 144x30x29H	GY.TS3014429.L3	4,660
144	36	29	Rect	2 piece	4)T32/2	Hi5 Gateway HPL Rect 2 piece table - 144x36x29H	GY.TS3614429.L3	5,270
144	42	29	Rect	2 piece	4)TT32/2	Hi5 Gateway HPL Rect 2 piece table - 144x42x29H	GY.T2S4214429.L3	7,070
144	48	29	Rect	2 piece	4)TT36/2	Hi5 Gateway HPL Rect 2 piece table - 144x48x29H	GY.T2S4814429.L3	8,510
168	24	29	Rect	2 piece	4)T22/2	Hi5 Gateway HPL Rect 2 piece table - 168x24x29H	GY.TS2416829.L3	4,430
168	30	29	Rect	2 piece	4)T26/2	Hi5 Gateway HPL Rect 2 piece table - 168x30x29H	GY.TS3016829.L3	5,120
168	36	29	Rect	2 piece	4)T32/2	Hi5 Gateway HPL Rect 2 piece table - 168x36x29H	GY.TS3616829.L3	5,820
168	42	29	Rect	2 piece	4)TT32/2	Hi5 Gateway HPL Rect 2 piece table - 168x42x29H	GY.T2S4216829.L3	7,720
168	48	29	Rect	2 piece	4)TT36/2	Hi5 Gateway HPL Rect 2 piece table - 168x48x29H	GY.T2S4816829.L3	9,240
192	24	29	Rect	2 piece	4)T22/2	Hi5 Gateway HPL Rect 2 piece table - 192x24x29H	GY.TS2419229.L3	4,810
192	30	29	Rect	2 piece	4)T26/2	Hi5 Gateway HPL Rect 2 piece table - 192x30x29H	GY.TS3019229.L3	5,590
192	36	29	Rect	2 piece	4)T32/2	Hi5 Gateway HPL Rect 2 piece table - 192x36x29H	GY.TS3619229.L3	6,370
192	42	29	Rect	2 piece	4)TT32/2	Hi5 Gateway HPL Rect 2 piece table - 192x42x29H	GY.T2S4219229.L3	8,360
192	48	29	Rect	2 piece	4)TT36/2	Hi5 Gateway HPL Rect 2 piece table - 192x48x29H	GY.T2S4819229.L3	9,980

OPTIONS (add in alphabetical order)

- CS – Casters Soft Floors (+\$200/table)
- CSH – Casters Hard Floors (+\$200/table)
See Caster and Leveler Specs, p. 13
Nesting tables include casters for soft floors
- GB / GS – Grommet Black/Silver (+\$40/ea)
See location choices: p. 7
- QR – Quick Release Leveling gangers (+\$300/set)
Location Code: A = short edges B = Long edges
See location choices: p. 7
- TG – Table Gangers (+\$200/set)
Location Code: A = short edges B = Long edges
See location choices: p. 7
- WMC2B/S – Snap on vertical wire manager for T, TT and X4 Gateway bases (+\$100/ea)

- #### SPECIFICATIONS/NOTES
- Handles & Base Configurations
- Beam nesting tables with T bases include 1 handle
 - Beam nesting tables with TT bases include 2 handles
 - Tables 60" and longer include 2 handles
 - Power units cannot be placed at the table center (interferes with beam nesting system)
 - Nesting tables include casters for soft floors
 - TT nesting tables include 3" locking casters
 - See Caster and Leveler Specifications (p. 13)
 - Folding carts are sold separately
 - Magnetic wire managers match base finish
 - Special sizes and heights are available
 - 36"H tables are priced the same as 42"H tables

- #### GENERAL STRUCTURAL SUPPORT GUIDELINES
- Tables 36" x 72" and larger require TT bases
 - Maximum span between legs is 56"; additional legs required beyond this distance
 - Maximum distance from end of table to the first leg: 12" up to 36"D tables and 18" up to 60"D tables
 - Legs may be inset from table ends as an alternative to anti-sag bars
 - Base footprint should be 70-80% of tabletop width (freestanding tables)
 - Standard top thickness: 1.25"
 - High Pressure Laminate (HPL)
 - Tables over 120" are manufactured in two pieces; grain will not match as this is laminate.
 - Minimum knee clearance: 27" height
 - Minimum knee depth clearance: 12"-15"

- #### STANDARD FINISHES
- Laminate Finish: Hi5 standard colors
Edge Finish: Hi5 standard colors
Base Finish: Hi5 standard colors

- #### ORDERING INSTRUCTIONS
1. List Model Code
 2. Add options alphabetically & location codes
 3. Specify finishes
 4. List quantity of each item



OPTIONS (add in alphabetical order)

- CS – Casters Soft Floors (+\$200/table)
- CSH – Casters Hard Floors (+\$200/table)
- See Caster and Leveler Specs, p. 13
- Nesting tables include casters for soft floors
- GB / GS – Grommet Black/Silver (+\$40/ea)
- See location choices: p. 7
- WMC2B/S – Snap on vertical wire manager for T, TT and X4 Gateway bases (+\$100/ea)

SPECIFICATIONS/NOTES

- Handles & Base Configurations
- Beam nesting tables with T bases include 1 handle
 - Beam nesting tables with TT bases include 2 handles
 - Tables 60" and longer include 2 handles
 - Power units cannot be placed at the table center (interferes with beam nesting system)
 - Nesting tables include casters for soft floors
 - TT nesting tables include 3" locking casters
 - See Caster and Leveler Specifications (p. 13)
 - Folding carts are sold separately
 - Magnetic wire managers match base finish
 - Special sizes and heights are available
 - 36"H tables are priced the same as 42"H tables

GENERAL STRUCTURAL SUPPORT GUIDELINES

- Tables 36" x 72" and larger require TT bases
- Maximum span between legs is 56"; additional legs required beyond this distance
- Maximum distance from end of table to the first leg: 12" up to 36"D tables and 18" up to 60"D tables
- Legs may be inset from table ends as an alternative to anti-sag bars
- Base footprint should be 70-80% of tabletop width (freestanding tables)
- Standard top thickness: 1.25"
- High Pressure Laminate (HPL)
- Tables over 120" are manufactured in two pieces; grain will not match as this is laminate.
- Minimum knee clearance: 27" height
- Minimum knee depth clearance: 12"-15"

STANDARD FINISHES

Laminate Finish: Hi5 standard colors
 Edge Finish: Hi5 standard colors
 Base Finish: Hi5 standard colors

ORDERING INSTRUCTIONS

1. List Model Code
2. Add options alphabetically & location codes
3. Specify finishes
4. List quantity of each item

L	H	Shape	Function	Bases	Description	Model Code	L3 Price
24	29	Round		1)X18/3	Hi5 Gateway HPL Round table - 24Dx29H	GY.XS2429.L3	1,430
24	29	Round	Nest	1)X18/3	Hi5 Gateway HPL Round Nest table - 24Dx29H	GY.XN2429.L3	2,040
24	36	Round		1)X22/3	Hi5 Gateway HPL Round table - 24Dx36H	GY.XS2436.L3	1,600
24	36	Round	Nest	1)X22/3	Hi5 Gateway HPL Round Nest table - 24Dx36H	GY.XN2436.L3	2,130
24	42	Round		1)X22/3	Hi5 Gateway HPL Round table - 24Dx42H	GY.XS2442.L3	1,600
24	42	Round	Nest	1)X22/3	Hi5 Gateway HPL Round Nest table - 24Dx42H	GY.XN2442.L3	2,130
30	29	Round		1)X22/3	Hi5 Gateway HPL Round table - 30Dx29H	GY.XS3029.L3	1,640
30	29	Round	Nest	1)X22/3	Hi5 Gateway HPL Round Nest table - 30Dx29H	GY.XN3029.L3	2,240
30	36	Round		1)X26/3	Hi5 Gateway HPL Round table - 30Dx36H	GY.XS3036.L3	1,840
30	36	Round	Nest	1)X26/3	Hi5 Gateway HPL Round Nest table - 30Dx36H	GY.XN3036.L3	2,370
30	42	Round		1)X26/3	Hi5 Gateway HPL Round table - 30Dx42H	GY.XS3042.L3	1,840
30	42	Round	Nest	1)X26/3	Hi5 Gateway HPL Round Nest table - 30Dx42H	GY.XN3042.L3	2,370
36	29	Round		1)X32/3	Hi5 Gateway HPL Round table - 36Dx29H	GY.XS3629.L3	1,890
36	29	Round	Nest	1)X32/3	Hi5 Gateway HPL Round Nest table - 36Dx29H	GY.XN3629.L3	2,500
36	36	Round		1)X32/3	Hi5 Gateway HPL Round table - 36Dx36H	GY.XS3636.L3	2,230
36	36	Round	Nest	1)X32/3	Hi5 Gateway HPL Round Nest table - 36Dx36H	GY.XN3636.L3	2,760
36	42	Round		1)X32/3	Hi5 Gateway HPL Round table - 36Dx42H	GY.XS3642.L3	2,230
36	42	Round	Nest	1)X32/3	Hi5 Gateway HPL Round Nest table - 36Dx42H	GY.XN3642.L3	2,760
42	29	Round		1)X32/3	Hi5 Gateway HPL Round table - 42Dx29H	GY.XS4229.L3	2,300
42	29	Round	Nest	1)X32/3	Hi5 Gateway HPL Round Nest table - 42Dx29H	GY.XN4229.L3	2,900
48	29	Round		1)X4-36/2	Hi5 Gateway HPL Round table - 48Dx29H	GY.X44829.L3	3,730
48	29	Round	Fold	2)TT36/2	Hi5 Gateway HPL Round Fold table - 48Dx29H	GY.T2F4829.L3	5,300
48	29	Round	Beam Nest	2)TT32/2	Hi5 Gateway HPL Round Beam Nest table - 48Dx29H	GY.T2N4829.L3	5,670
54	29	Round		1)X4-36/2	Hi5 Gateway HPL Round table - 54Dx29H	GY.X45429.L3	3,910
54	29	Round	Beam Nest - weighs 135 lbs.	2)TT32/2	Hi5 Gateway HPL Round Beam Nest table - 54Dx29H	GY.T2N5429.L3	6,200
54	29	Round	Fold - weighs 125 lbs.	2)TT36/2	Hi5 Gateway HPL Round Fold table - 54Dx29H	GY.T2F5429.L3	5,860
60	29	Round		1)X4-36/2	Hi5 Gateway HPL Round table - 60Dx29H	GY.X46029.L3	4,350
60	29	Round	Fold - weighs 130 lbs.	2)TT36/2	Hi5 Gateway HPL Round Fold table - 60Dx29H	GY.T2F6029.L3	6,465
60	29	Round	Beam Nest - weighs 140 lbs.	2)TT32/2	Hi5 Gateway HPL Round Beam Nest table - 60Dx29H	GY.T2N6029.L3	6,200
72	29	Round		1)X4-36/2	Hi5 Gateway HPL Round table - 72Dx29H	GY.X47229.L3	6,600
72	29	Round	Fold - weighs 180 lbs.	2)TT36/2	Hi5 Gateway HPL Round Fold table - 72Dx29H	GY.T2F7229.L3	7,620
72	29	Round	Split Beam Nest - weighs 195 lbs.	2)TT36/2	Hi5 Gateway HPL Round Split Beam Nest table - 72Dx29H	GY.T2N7229.L3	17,330
84	29	Round	Split Beam Nest - weighs 240 lbs.	2)TT36/2	Hi5 Gateway HPL Round Split Beam Nest table - 84Dx29H	GY.T2N8429.L3	18,900



L	W	H	Shape	Function	Base Style	Description	Model Code	L3 Price
18	18	29	Square		1)X18/3	Hi5 Gateway HPL Square table - 18x18x29H	GY.XS181829.L3	1,260
18	18	36	Square		1)X22/3	Hi5 Gateway HPL Square table - 18x18x36H	GY.XS181836.L3	1,600
18	18	42	Square		1)X22/3	Hi5 Gateway HPL Square table - 18x18x42H	GY.XS181842.L3	1,600
24	24	29	Square		1)X22/3	Hi5 Gateway HPL Square table - 24x24x29H	GY.XS242429.L3	1,430
24	24	29	Square	Nest	1)X22/3	Hi5 Gateway HPL Square Nest table - 24x24x29H	GY.XN242429.L3	2,040
24	24	36	Square		1)X26/3	Hi5 Gateway HPL Square table - 24x24x36H	GY.XS242436.L3	1,620
24	24	36	Square	Nest	1)X26/3	Hi5 Gateway HPL Square Nest table - 24x24x36H	GY.XN242436.L3	2,130
24	24	42	Square		1)X26/3	Hi5 Gateway HPL Square table - 24x24x42H	GY.XS242442.L3	1,620
24	24	42	Square	Nest	1)X26/3	Hi5 Gateway HPL Square Nest table - 24x24x42H	GY.XN242442.L3	2,130
30	30	29	Square		1)X26/3	Hi5 Gateway HPL Square table - 30x30x29H	GY.XS303029.L3	1,640
30	30	29	Square	Nest	1)X26/3	Hi5 Gateway HPL Square Nest table - 30x30x29H	GY.XN303029.L3	2,240
30	30	36	Square		1)X32/3	Hi5 Gateway HPL Square table - 30x30x36H	GY.XS303036.L3	1,940
30	30	36	Square	Nest	1)X32/3	Hi5 Gateway HPL Square Nest table - 30x30x36H	GY.XN303036.L3	2,470
30	30	42	Square		1)X32/3	Hi5 Gateway HPL Square table - 30x30x42H	GY.XS303042.L3	1,940
30	30	42	Square	Nest	1)X32/3	Hi5 Gateway HPL Square Nest table - 30x30x42H	GY.XN303042.L3	2,470
36	36	29	Square		1)X32/3	Hi5 Gateway HPL Square table - 36x36x29H	GY.XS363629.L3	1,890
36	36	29	Square	Nest	1)X32/3	Hi5 Gateway HPL Square Nest table - 36x36x29H	GY.XN363629.L3	2,500
36	36	36	Square		1)X32/3	Hi5 Gateway HPL Square table - 36x36x36H	GY.XS363636.L3	2,230
36	36	36	Square	Nest	1)X32/3	Hi5 Gateway HPL Square Nest table - 36x36x36H	GY.XN363636.L3	2,760
36	36	42	Square		1)X32/3	Hi5 Gateway HPL Square table - 36x36x42H	GY.XS363642.L3	2,230
36	36	42	Square	Nest	1)X32/3	Hi5 Gateway HPL Square Nest table - 36x36x42H	GY.XN363642.L3	2,760
42	42	29	Square		1)X32/3	Hi5 Gateway HPL Square table - 42x42x29H	GY.XS424229.L3	2,300
42	42	29	Square	Beam Nest	2)TT32/2	Hi5 Gateway HPL Square Beam Nest table - 42x42x29H	GY.T2N424229.L3	4,880
48	48	29	Square		1)X4-36/2	Hi5 Gateway HPL Square table - 48x48x29H	GY.X4484829.L3	3,990
48	48	29	Square	Beam Nest	2)TT32/2	Hi5 Gateway HPL Square Beam Nest table - 48x48x29H	GY.T2N484829.L3	5,670
48	48	36	Square		1)X4-36/2	Hi5 Gateway HPL Square table - 48x48x36H	GY.X4484836.L3	4,620
48	48	42	Square		1)X4-36/2	Hi5 Gateway HPL Square table - 48x48x42H	GY.X4484842.L3	4,620
54	54	29	Square		1)X4-36/2	Hi5 Gateway HPL Square table - 54x54x29H	GY.X4545429.L3	5,100
60	60	29	Square		1)X4-36/2	Hi5 Gateway HPL Square table - 60x60x29H	GY.X4606029.L3	5,100

OPTIONS (add in alphabetical order)

- CS – Casters Soft Floors (+\$200/table)
- CSH – Casters Hard Floors (+\$200/table)
See Caster and Leveler Specs, p. 13
Nesting tables include casters for soft floors
- GB / GS – Grommet Black/Silver (+\$40/ea)
See location choices: p. 7
- QR – Quick Release Leveling gangers (+\$300/set)
Location Code: A = short edges B = Long edges
See location choices: p. 7
- TG – Table Gangers (+\$200/set)
Location Code: A = short edges B = Long edges
See location choices: p. 7
- WMC2B/S – Snap on vertical wire manager for T, TT and X4 Gateway bases (+\$100/ea)

- #### SPECIFICATIONS/NOTES
- Handles & Base Configurations
- Beam nesting tables with T bases include 1 handle
 - Beam nesting tables with TT bases include 2 handles
 - Tables 60" and longer include 2 handles
 - Power units cannot be placed at the table center (interferes with beam nesting system)
 - Nesting tables include casters for soft floors
 - TT nesting tables include 3" locking casters
 - See Caster and Leveler Specifications (p. 13)
 - Folding carts are sold separately
 - Magnetic wire managers match base finish
 - Special sizes and heights are available
 - 36"H tables are priced the same as 42"H tables

- #### GENERAL STRUCTURAL SUPPORT GUIDELINES
- Tables 36" x 72" and larger require TT bases
 - Maximum span between legs is 56"; additional legs required beyond this distance
 - Maximum distance from end of table to the first leg: 12" up to 36"D tables and 18" up to 60"D tables
 - Legs may be inset from table ends as an alternative to anti-sag bars
 - Base footprint should be 70-80% of tabletop width (freestanding tables)
 - Standard top thickness: 1.25"
 - High Pressure Laminate (HPL)
 - Tables over 120" are manufactured in two pieces; grain will not match as this is laminate.
 - Minimum knee clearance: 27" height
 - Minimum knee depth clearance: 12"-15"

STANDARD FINISHES

Laminate Finish: Hi5 standard colors
Edge Finish: Hi5 standard colors
Base Finish: Hi5 standard colors

- #### ORDERING INSTRUCTIONS
1. List Model Code
 2. Add options alphabetically & location codes
 3. Specify finishes
 4. List quantity of each item



TERMS AND CONDITIONS + WARRANTY

Effective: 04/01/26

EFFECTIVE: APRIL 1, 2026



Hi5 Furniture, Inc.
4304 NW Mattox Road, Riverside, MO 64150

Terms and Conditions of Sale

These Terms and Conditions of Sale ("Terms") are part of and incorporated into every quotation, bid response, sales acknowledgment, purchase order acceptance, invoice, and other sales document issued by Hi5 Furniture, Inc. ("Hi5"). These Terms apply to all sales of products and services by Hi5 unless Hi5 expressly agrees otherwise in a writing signed by an authorized officer of Hi5. Any additional, inconsistent, or conflicting terms proposed by a dealer, purchaser, or end user are rejected and shall not apply unless expressly accepted by Hi5 in writing.

For purposes of these Terms, "Customer" means the Authorized Commercial Furniture Dealership ("Dealer") purchasing directly from Hi5, unless otherwise expressly agreed in writing.

1. Orders; Acceptance

All orders must be submitted in writing or electronically through a valid purchase order and must include the product total and all information reasonably required by Hi5 to process the order.

No order is binding on Hi5 until Hi5 issues a written order acknowledgment. The order acknowledgment will reflect Hi5's understanding of the order, including pricing and an anticipated ship or delivery date. Customer is responsible for reviewing the acknowledgment immediately and notifying Hi5 in writing of any discrepancy within forty-eight (48) hours after issuance. If no written objection is received within that period, the acknowledgment will be deemed accepted and controlling.

2. Required Purchase Order Information

To process an order, Customer must provide complete and accurate information, including as applicable:

- sold-to legal name, address, phone, and email;
- ship-to legal name and address;
- purchase order number for the party to be invoiced;
- authorized signature, if a signature line is present;
- contact name and phone number for order questions;
- shipping contact name and phone number;
- tagging instructions;
- product total in net dollars;
- any installation, design, project management, and service fees;
- quantities, product numbers, finishes, colors, and model codes;
- approval drawings, signed by an authorized representative when required;
- delivery instructions, site requirements, electrical plans, and other installation-related information.

Hi5 may delay processing, manufacturing, shipment, or installation until all required information is received.

3. Order Changes and Cancellations

All order changes and cancellations must be submitted in writing. No oral change is binding.

For specials, Customer's Own Material ("C.O.M."), finish matches, custom colors, custom products, master lock and key orders, and rush orders, no changes or cancellations are permitted more than forty-eight (48) hours after order placement.

For all other products, changes and cancellations are subject to Hi5 approval. Hi5 may impose a reasonable change or cancellation charge to cover administrative expense, material cost, engineering, production interruption, restocking, freight, or other resulting costs.

Changes include, without limitation, deletion of line items, or changes in quantity, size, finish, color, model, ship-to address, installation scope, or requested services. Additions may be accepted without penalty, but may cause the order or affected line items to be rescheduled. Any change that increases order value must be supported by an amended purchase order or other documentation acceptable to Hi5.

Ship-to address changes made within five (5) business days of scheduled shipment or delivery may incur relabeling, reconsignment, storage, and related administrative charges.

No order change or cancellation is binding until acknowledged in writing by Hi5.

4. Pricing

Prices are based on Hi5's published price book and applicable discounts in effect at the time Hi5 receives the order, unless otherwise stated in writing. Published prices, discounts, surcharges, and program terms are subject to change without notice.

Unless otherwise expressly stated, prices do not include freight, storage, installation, design, project management, taxes, duties, permit costs, disposal charges, or special handling.

If a requested delivery date is more than one hundred twenty (120) days after order receipt, Hi5 reserves the right to apply published pricing in effect at the time of shipment.

5. Payment Terms; Credit; Deposits

Payment terms and credit limits, if any, will be established by Hi5 based on financial and credit information acceptable to Hi5. Standard open-account terms are net thirty (30) days from invoice date unless otherwise stated in writing.

Hi5 may require advance payment, progress payments, deposits, personal guaranties, credit card authorization, or other payment security at any time. For custom orders and projects exceeding \$50,000 net, Hi5 may require a deposit before order entry, production, or shipment.

Customer's account must remain within its assigned credit limit and current at all times. Hi5 may suspend production, withhold shipment, delay delivery, revoke credit, or cancel orders if Customer's account is over limit, delinquent, or if Hi5 reasonably believes Customer's financial condition has become impaired.

Customer authorizes Hi5 to obtain credit reports, bank references, trade references, and other financial information from third parties and authorizes such parties to release information to Hi5 for credit evaluation and collection purposes.

6. Past-Due Amounts

Past-due balances may accrue a service charge at the lesser of one and one-half percent (1.5%) per month or the maximum rate permitted by applicable law, plus reasonable collection costs, including attorneys' fees and court costs where permitted by law.

7. Forms of Payment

Accepted forms of payment may include check, ACH, wire transfer, and approved credit card payments. Credit card payments may be subject to a processing fee where permitted by law.

8. Taxes

Prices do not include customs duties, sales taxes, use taxes, excise taxes, value-added taxes, or similar taxes. Customer is responsible for all taxes and governmental charges arising from the sale, shipment, delivery, installation, or use of the products or services, except taxes based solely on Hi5's net income. If Customer claims exemption, Hi5 must receive and approve a valid exemption certificate before shipment. Otherwise, applicable tax will be charged and must be paid by Customer.

Hi5 Furniture, Inc.
4304 NW Mattox Road, Riverside, MO 64150

9. Shipment; Delivery; Freight

All shipments are FOB Destination from Hi5 Furniture, Inc.'s manufacturing facilities. Title to and risk of loss transfer to Customer upon delivery to the designated delivery location identified in the order. Hi5 may determine method of shipment, carrier, and routing unless otherwise agreed in writing.

Unless otherwise stated in writing, standard freight terms are dock-to-dock delivery only.

Additional services, including inside delivery, residential delivery, liftgate service, limited-access service, special appointment scheduling, detention, storage, rerouting, reconsignment, or other nonstandard delivery requirements, will be charged to Customer.

If delivery must be made to an intermediate or alternate location at Customer's request, risk of loss transfers upon delivery to that location. All products are shipped in compliance with applicable freight classification standards. Unless otherwise specified, products ship unassembled. Hi5 is not responsible for site conditions preventing delivery.

10. Delivery Dates; Delays

Any stated ship or delivery date is an estimate only and is not guaranteed unless Hi5 expressly agrees otherwise in writing. Hi5 is not liable for delay caused by material shortages, labor conditions, transportation disruptions, acts of God, force majeure, governmental action, Customer-caused delay, changes to the order, incomplete information, site conditions, or any cause beyond Hi5's reasonable control.

Hi5 is not responsible for labor charges, installation fees, liquidated damages, back charges, or consequential costs arising from delayed shipment or delivery unless Hi5 expressly agrees in a signed writing.

11. Storage; Customer Delay

If Customer cannot or will not accept delivery when scheduled, Hi5 may store the products at Customer's risk and expense, either at Hi5's facility or with a third party. Upon transfer to storage, risk of loss passes to Customer. Hi5 may invoice Customer for the products, storage, handling, transfer, insurance, and incidental expenses upon placement into storage. Unless otherwise stated by Hi5 in writing, storage charges may be assessed on the net order value as follows:

- one month: 2%
- two months: 4%
- three months: 6%
- four months: 8%

Additional months may be charged at Hi5's then-current storage rates.

Any delay caused by Customer, including incomplete specifications, missing approvals, inaccurate field conditions, missing site readiness, or lack of shipping or installation information, constitutes a Customer delay.

12. Inspection; Shortages; Damage; Freight Claims

Customer must inspect all shipments at the time of delivery. Any visible shortage, damage, or delivery discrepancy must be noted in detail on the delivery receipt before the carrier departs. All cartons, crates, and packages should be opened and inspected promptly, regardless of external condition.

Claims against Hi5 for shortage, shipping error, or damage must be submitted in writing **within ten (10) calendar days after delivery** and must include supporting documentation, including signed delivery receipt, photographs, and item-specific details. Failure to provide timely notice constitutes acceptance of the shipment and waiver of the claim to the fullest extent permitted by law.

If Hi5 agrees to assist with a freight claim, Customer must provide all requested supporting documents promptly. Freight claims are subject to carrier rules and procedures.

13. Returns; Approved Returns

No product may be returned without Hi5's prior written approval and a Return Material Authorization ("RMA"). Approved returns must be returned freight prepaid to the location identified by Hi5 and must be packaged in original or equivalent protective packaging. Customer bears all risk of damage resulting from improper return packaging. Collect shipments will not be accepted.

All packages must be clearly marked with the applicable RMA number. Returned product may be subject to inspection, restocking charges, repair charges, repackaging charges, and credits in amounts determined by Hi5. Custom, special, made-to-order, C.O.M., finish-match, discontinued, or nonstandard items are not returnable unless Hi5 expressly agrees otherwise in writing.

14. Dealer Responsibilities

Where a project involves a selling dealership and an installing dealership, the parties shall allocate responsibilities as follows unless otherwise agreed in writing.

A. Installing Dealership Responsibilities

The installing dealership shall:

- designate non-commissioned employees, such as a project manager, to coordinate and administer inbound orders;
- manage administrative responsibilities accurately, completely, and timely;
- maintain insurance, including public liability, products liability, operations liability, workers' compensation, occupational disease, automobile liability, property damage, and coverage for merchandise in its care, custody, or control, each with limits of not less than \$1,000,000 unless greater limits are required by contract or law;
- use experienced, high-quality installers if subcontracting installation;
- maintain adequate warehouse space for at least one truckload of furniture;
- maintain delivery vehicle capability and appropriate handling equipment;
- maintain tools, touch-up supplies, spare parts, and hardware reasonably necessary for commercial furniture installation;
- maintain CAD capability or access to qualified drafting support when required;
- conduct pre-installation and post-installation meetings with the customer;
- confirm delivery dates with the customer at least forty-eight (48) hours in advance;
- communicate service-related taxes promptly to the selling dealership;
- receive, inspect, and report damaged or replacement product information;
- take field measurements and inspect the site within one week after receiving the installation package;
- coordinate other trades and attend construction meetings as needed;
- install product according to Hi5's written installation instructions;
- remove installation debris and dispose of job-site trash unless otherwise agreed;
- prepare a punch list;
- obtain customer sign-off upon completion;
- provide fee-based post-installation services, including add-ons, maintenance, reconfiguration, and warranty support, when requested.

Hi5 Furniture, Inc.
4304 NW Mattox Road, Riverside, MO 64150

B. Selling Dealership Responsibilities

The selling dealership shall:

- assist the customer with evaluation, specification, and design consultation;
- select the installing dealership prior to order entry;
- obtain installation pricing and confirm the agreed installation fee;
- procure mockups where required;
- use Hi5's symbols library and CET Designer, or equivalent design software, to prepare design specifications;
- prepare and submit purchase orders and takeoffs;
- review the installation package with the installing dealership;
- verify purchase orders and acknowledgments for accuracy;
- coordinate change orders and revised purchase orders;
- communicate shipping schedules with the installing dealership;
- send the installation package to the installing dealership at least two weeks before shipment, including drawings, packaging instructions, purchase order, delivery instructions, electrical plans, project contacts, and other necessary installation information;
- notify the installing dealership of design changes within forty-eight (48) hours and communicate backorders or shortages;
- coordinate add-on orders and revised purchase orders;
- invoice the customer and pay vendors if the installing dealership holds the purchase order;
- file and monitor freight claims;
- file and monitor warranty claims.

15. Site Conditions; Installation Requirements

Customer is responsible for ensuring the site is ready, accessible, and suitable for delivery and installation. Unless otherwise expressly agreed in writing, electrical hardwiring, plumbing, data, mechanical work, permits, inspections, bonds, and coordination with other trades are the responsibility of Customer or others retained by Customer. Any building where products are to be installed must be enclosed, dry, protected from the elements, and maintained between 40°F and 90°F, with relative humidity not exceeding 70%, at receipt, during installation, and thereafter to the extent necessary to preserve product condition.

16. Use of Products

Customer agrees to use, maintain, and permit use of the products only in accordance with Hi5's written instructions, care guidance, warnings, and recommendations. Customer shall not remove or alter any safety device, label, warning, or operating instruction.

17. Product Obsolescence; Product Changes

Hi5 may modify, improve, discontinue, or replace products, materials, components, finishes, fabrics, and specifications at any time. Hi5 will make reasonable efforts to provide advance notice of product discontinuance and, where commercially reasonable, identify comparable alternatives.

Hi5 may continue discontinued products as custom requests on a case-by-case basis only if commercially reasonable and subject to then-current lead times, pricing, and material availability. Compatibility with prior generations of product, finishes, or components is not guaranteed unless expressly stated in writing.

18. Limited Warranty

Hi5's written Limited Warranty in effect on the date of manufacture applies to covered products. The Limited Warranty is incorporated into these Terms by reference. In the event of any conflict between these Terms and the Limited Warranty, the Limited Warranty controls solely with respect to warranty coverage and remedy, and these Terms control in all other respects.

19. Disclaimer of Other Warranties

EXCEPT FOR THE EXPRESS LIMITED WARRANTY PROVIDED BY HI5, HI5 DISCLAIMS ALL OTHER WARRANTIES, EXPRESS OR IMPLIED, INCLUDING ANY IMPLIED WARRANTY OF MERCHANTABILITY, FITNESS FOR A PARTICULAR PURPOSE, TITLE, AND NON-INFRINGEMENT, TO THE FULLEST EXTENT PERMITTED BY APPLICABLE LAW.

20. Limitation of Remedies and Liability

TO THE FULLEST EXTENT PERMITTED BY APPLICABLE LAW, CUSTOMER'S EXCLUSIVE REMEDY AND HI5'S SOLE LIABILITY SHALL BE LIMITED TO REPAIR, REPLACEMENT, OR REFUND. TO THE FULLEST EXTENT PERMITTED BY LAW, HI5 SHALL NOT BE LIABLE FOR ANY INCIDENTAL, CONSEQUENTIAL, INDIRECT, SPECIAL, OR PUNITIVE DAMAGES. Any claim must be brought in accordance with applicable law, including the Uniform Commercial Code as adopted in the State of Missouri.

21. Force Majeure

Neither party shall be liable for failure or delay in performance caused by events beyond its reasonable control, including fire, explosion, flood, storm, epidemic, pandemic, power outage, war, terrorism, civil disturbance, governmental action, embargo, labor dispute, transportation interruption, material shortage, utility interruption, or inability to obtain labor, fuel, components, or facilities. The affected party shall be excused from performance for the duration of the force majeure event and for a reasonable recovery period.

22. Termination; Insecurity

Hi5 may suspend performance or terminate any order or agreement upon written notice if Customer becomes insolvent, files for bankruptcy, is the subject of an involuntary insolvency proceeding, makes an assignment for the benefit of creditors, fails to provide adequate assurance of performance, or materially breaches these Terms.

23. Governing Law; Venue

These Terms, and any sale of products or services by Hi5 for delivery in the United States, shall be governed by and construed in accordance with the laws of the State of Missouri, without regard to conflict-of-law rules. The parties consent to the exclusive jurisdiction and venue of the state and federal courts located in Missouri for any dispute arising out of or relating to these Terms or the sale of products or services by Hi5. The United Nations Convention on Contracts for the International Sale of Goods does not apply.

24. Miscellaneous

These Terms constitute the entire agreement between Hi5 and Dealer and supersede all prior communications. No modification shall be binding unless in writing and signed by Hi5. If any provision is held invalid or unenforceable, the remaining provisions shall remain in full force and effect. No waiver by Hi5 is effective unless in writing. A waiver of one breach is not a waiver of any other breach. Customer may not assign its rights or obligations without Hi5's prior written consent. Customer acknowledges it is not relying on any representations not expressly set forth in these Terms or Hi5's written acknowledgment.

25. Dealer as Contractual Counterparty

The Authorized Commercial Furniture Dealership ("Dealer") is Hi5's sole contractual counterparty for all transactions, including ordering, payment, delivery coordination, installation coordination, warranty claims, and service requests. Hi5 shall have no direct contractual obligation to any end user unless expressly agreed in writing.

Hi5 Furniture, Inc. Limited Warranty

4304 NW Mattox Road, Riverside, MO 64150

1. Limited Warranty Coverage

Hi5 Furniture, Inc. ("Hi5") warrants its products solely to the Authorized Commercial Furniture Dealership ("Dealer") that purchased the products directly from Hi5 beginning April 1, 2026.

This Limited Warranty is not a direct warranty to the end-user.

This warranty is intended for commercial applications and includes 24-hour / 7-day multiple-shift use unless a shorter product-specific warranty period is stated below.

2. Start and End of Warranty Period

The warranty period begins on the Covered Product's date of manufacture and continues for the period stated below, provided the original end-user purchaser continues to own, possess, control, and use the Covered Product.

The warranty will automatically terminate if:

- the Covered Product is resold or transferred to another owner;
- the product is moved, modified, or reconfigured by unauthorized persons in a manner that causes or contributes to the claim;
- the Hi5 invoice for the applicable order is not paid in full within ninety (90) days of shipment; or
- the product is used other than in normal commercial use or contrary to Hi5's written instructions.

3. What Is Covered

Subject to the exclusions, limitations, and conditions in this Limited Warranty, Hi5 covers defects in design, materials, or workmanship that materially impair the performance or functionality of a Covered Product under normal use.

"Normal use" means use consistent with:

- Hi5's written instructions, installation procedures, care guidance, warnings, and recommendations;
- any applicable third-party manufacturer instructions for components not manufactured by Hi5 but integrated into a Hi5 product offering; and
- applicable laws, codes, rules, and ordinances.

4. What Is Not Covered

This Limited Warranty does not cover:

- normal wear and tear;
- misuse, abuse, neglect, accident, vandalism, or improper storage, handling, transport, assembly, installation, maintenance, or repair;
- damage caused by acts of God or events beyond Hi5's reasonable control;
- damage occurring during transport after risk has passed or where receiving procedures were not followed;
- customer's own material (C.O.M.) or any nonstandard material specified by purchaser;
- third-party products sold by Hi5 but not manufactured by Hi5 and not incorporated as Hi5 components, except to the extent any assignable manufacturer warranty is assigned;
- software;
- consumable items, including batteries, bulbs, and lamps;
- natural variation in color, grain, texture, figuring, or pattern in wood, leather, stone, quartz, reclaimed wood, glass, fabric, laminates, or other natural or decorative materials;
- fading, discoloration, patina, dye lot variation, puddling, wrinkling, crocking, or other aesthetic changes occurring over time or through use;
- damage caused by sunlight, UV exposure, environmental conditions, harsh chemicals, improper cleaners, or improper maintenance;
- floor damage, scratching, or wear caused by glides, casters, or movement of the product;
- products used outdoors unless specifically designated by Hi5 as outdoor products;
- damage caused by integration with non-Hi5 products, materials, devices, or accessories;
- discontinued products, custom products, and materials used by custom request, except as Hi5 may expressly agree in writing.

5. Warranty Periods

Lifetime Warranty

Except as otherwise stated below, the warranty period for a Covered Product is the lifetime of the product for so long as the original end-user purchaser continues to solely own and use the product.

Five (5) Year Warranty

The following have a five (5) year warranty period:

- Electrical power boxes and AV accessories

One (1) Year Warranty

The following have a one (1) year warranty period:

- Moving components or parts, including Gas Cylinders, Folding/Nesting Mechanisms, Adjustable height mechanisms, Table gangers, Leveling Table Gangers, and Swivel Cup Holders.
- Glides, levelers, locking and non-locking casters.
- Gather Accessory Products, including Plants, Two-Sided Magnetic Dry Erase Board, Supply Cup, and Stackable PET bins,
- Markerboards (horizontal or vertical)
- PET and Hush fabric products
- HPL self-edged tabletops

For height-adjustable and other mechanism-related claims, Hi5 troubleshooting procedures must be followed, and any required error code or diagnostic information must be included in the warranty claim submission.

No Warranty

The following are not Covered Products and are excluded from this Limited Warranty:

- items excluded under Sections 1 and 4 above;
- HPL self-edges, except Union 2.0 table HPL self-edges to the extent stated above;
- materials used by custom request.

6. Service Parts

Authorized service parts installed on a Covered Product by Hi5 or by an authorized installer are covered only for the remainder of the original warranty period applicable to that Covered Product.

Hi5 Furniture, Inc. Limited Warranty

4304 NW Mattox Road, Riverside, MO 64150

7. Exclusive Remedy

If Hi5 determines that a valid warranty claim exists, Hi5 will, at its option:

- repair the defective product or component;
- provide replacement parts;
- replace the product with the same or a comparable product; or
- issue a credit or refund for the original net purchase price of the affected product or component.

Any replacement product or part may be new, reconditioned, remanufactured, or functionally equivalent. If a product is discontinued, Hi5 may substitute a comparable product, material, finish, or component.

These remedies are the sole and exclusive remedies under this Limited Warranty.

8. Costs Not Covered

Unless Hi5 expressly agrees otherwise in writing, this Limited Warranty does not cover and Hi5 is not responsible for:

- labor for removal, disassembly, installation, or reinstallation;
- shipping, freight, delivery, storage, travel, mileage, receiving, or disposal charges;
- field finishing, touch-up, or refinishing costs;
- overtime, premium labor, project delay, or third-party coordination costs;
- permit, inspection, or trade costs;
- consequential, incidental, indirect, special, punitive, or exemplary damages.

Any labor credit approved by Hi5 must be supported by documentation acceptable to Hi5 and is subject to Hi5's written approval in advance. Unless Hi5 expressly approves otherwise in writing, labor reimbursement will not exceed \$40.00 per hour.

9. How to Make a Warranty Claim

To submit a warranty claim, Authorized Commercial Furniture Dealership must submit all warranty claims by emailing the below information to Sales@Hi5Furniture.com and provide:

- Email subject line: **PO#, Line # WARRANTY CLAIM NOTICE**;
- digital photographs of the product, label, underside, base/hardware, and the reported issue from both close and wider views;
- a statement identifying the exact line item involved;
- model code, quantities, and a description of the issue and apparent cause;
- if repair or touch-up is requested, a detailed written estimate describing the proposed work;
- proof that the invoice has been paid in full.

If Hi5 requests additional information, failed parts, site details, or inspection access, claimant must cooperate promptly.

10. Credit Memo Information

If Hi5 approves a labor credit or credit memo, claimant must provide the following in Hi5's required format:

- Hi5 order number;
- Dealer PO number;
- Net amount of order;
- Total labor estimate;
- Whether labor was performed by dealership employees or a third-party installer;
- Third-party estimate, if applicable;
- Number of installers;
- Hours per installer;
- Hourly rate;
- Job Site address;
- Miles from receiving location;
- Travel charges, if applicable;
- Trash/disposal charges, if applicable;
- Receiving charges, if applicable;

No alternative quote format will be accepted unless approved by Hi5 in writing.

11. Replacement Parts or Replacement Orders

If Hi5 approves replacement parts or replacement product under warranty, Hi5 may require a replacement order referencing the approved claim. Approved warranty replacement orders will not be charged to the extent expressly authorized by Hi5.

12. Inspection and Maintenance Requirement

To preserve warranty coverage, products should be inspected periodically, including approximately every two months where practical, for loose screws, missing glides or levelers, cracked welds, unseated columns, damaged mechanisms, worn casters, or other conditions requiring service. Failure to perform reasonable inspection and maintenance may void coverage for resulting damage.

13. Care and Maintenance

This Limited Warranty requires proper care and maintenance consistent with Hi5's current care and maintenance instructions for the applicable material or product category, including but not limited to upholstery, PET, powder coat, aluminum, chrome, laminate, PVC edges, wood, reclaimed wood, quartz, solid surface, and glass.

Improper cleaning methods, harsh solvents, abrasive materials, excessive moisture, environmental abuse, misuse, and failure to follow Hi5 care instructions are excluded from warranty coverage.

14. Disclaimer of Other Warranties

THIS LIMITED WARRANTY IS THE ONLY EXPRESS WARRANTY MADE BY HI5. EXCEPT TO THE EXTENT PROHIBITED BY APPLICABLE LAW, HI5 DISCLAIMS ALL OTHER WARRANTIES, EXPRESS OR IMPLIED, INCLUDING IMPLIED WARRANTIES OF MERCHANTABILITY, FITNESS FOR A PARTICULAR PURPOSE, TITLE, AND NON-INFRINGEMENT.

15. Limitation of Liability

TO THE FULLEST EXTENT PERMITTED BY APPLICABLE LAW, HI5 SHALL NOT BE LIABLE FOR ANY INCIDENTAL, CONSEQUENTIAL, INDIRECT, SPECIAL, EXEMPLARY, OR PUNITIVE DAMAGES, INCLUDING LOST PROFITS, LOSS OF USE, BUSINESS INTERRUPTION, RENTAL OF SUBSTITUTE GOODS, PROJECT DELAY COSTS, OR THIRD-PARTY CLAIMS, WHETHER ARISING IN CONTRACT, WARRANTY, TORT, OR OTHERWISE.

HI5'S MAXIMUM LIABILITY UNDER THIS LIMITED WARRANTY SHALL NOT EXCEED THE ORIGINAL NET PURCHASE PRICE OF THE AFFECTED PRODUCT OR COMPONENT.

16. Commercial Warranty

This Limited Warranty is intended for commercial transactions involving contract furniture sold through authorized dealerships. It is not intended to create any "full warranty" or other consumer-warranty designation unless Hi5 expressly states otherwise in a separate writing.

Dealer may pass through the benefit of this Limited Warranty to its end-user customer; however:

- such pass-through does not create a direct contractual relationship between Hi5 and the end user
- Hi5 retains no direct obligation to the end user