

TO ORDER, SPECIFY:

1 List Model Code with the color code

- B Black
- S Silver
- W White

2 List the AV Plate code, if applicable:

- 0 Blank Plate to Cover Hole (+10/ea)
- 1 2 Data Jacks (+180/ea)
- 21 2 Data Jacks and 1 HDMI (+380/ea)
- 24 1 HDMI (+220/ea)
- 25 2 HDMI (+420/ea)
- 48 1 Data Jacks and 1 HDMI (+300/ea)

3 List the Location Code of your boxes

- PbL Left/Middle Edge
- PaL Center Edge
- PcL Right/Middle Edge

- PeL Left/Middle Center
- PdL Center of table
- PfL Right/Middle Center

Use edge mounted location s to mount into Coby Apron Tables Only

- PjL Apron edge mounted – lower left
- PkL Apron edge mounted – lower center
- PmL Apron edge mounted – lower right
- PnL Apron edge mounted – right short end

- PrL Apron edge mounted – upper left
- PpL Apron edge mounted – upper center
- PoL Apron edge mounted – upper right
- Psl Apron edge mounted – left short end

4 List the Qty and Length of Starter Cables

PSTS72F 72" Starter (+\$270/ea.)

Note: 20AMP to 15AMP adapter included

PSTS96F 96" Starter (+\$390/ea.)

Note: 20AMP to 15AMP adapter included

Note: Consists of a two-part cable (PSTS7F + DAISYFM-24)

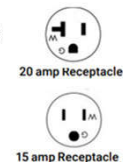
PSTS120F 120" Starter (+\$430/ea.)

Note: 20AMP to 15AMP adapter included

Note: Consists of a two-part cable (PSTS7F + DAISYFM-48)

5 List the Qty and Length of Starter Cat

- PUR-72 72" Starter (+\$650/ea.)
- PUR-108 108" Starter (+\$660/ea.)
- PUR-120 120" Starter (+\$670/ea.)
- PUR-132 132" Starter (+\$680/ea.)
- PUR-144 144" Starter (+\$690/ea.)



Charm Power

- Includes loop clamps for under table wire management.
- 15A/120V AC Receptacles
- Convenience Outlet
- Cord Pass throughs
- Cord Length: 72"



Cove Power

- Includes loop clamps for under table wire management.
- Linking cables included
- 15A/120V AC Spill-Resistant
- Cord Length: 108"
- 60 Watt 180° Cord – 90° Plug
- Can link up to 8 units



Slick Power

- Includes loop clamps for under table wire management.
- Linking cables included
- Size: 2.3" x 6" long x 1.81 high
- 2 – 15A, 120V AC Power Outlets
- Cord Length: 120"
- Can link up to 8 units



Volt Power

- Includes loop clamps for under table wire management.
- Linking cables included
- Outer Pan included (PV-Pan)
- 20A/120V AC Receptacles
- Link Up-to 3 Units



Zing Power

- Includes loop clamps for under table wire management.
- Linking cables included
- Size: 5" x 7" x 1.57" high pop-up
- Gas Strut Open/Close
- Meets UL Spill Requirements
- Cord Length: 120"
- Can link up to 8 units

	# OF OUTLETS	# OF USB-A	# OF USB-C	# OF AV PLATES	MODEL CODE	LIST PRICE
Charm Non-Linking	2			1	PCM2S-1-2-3	500
Charm Non-Linking	2	2		1	PCM2USBS-1-2-3	700
Charm Hardwired	2			1	PCM2H-1-2-3	560
Charm Hardwired	2	2		1	PCM2USBH-1-2-3	770

TIP: When specified with hardwired infeed, a licensed electrician is required to complete hardwire connections to building's power source.

Cove Non-Linking	2	-	-	-	PC-1-108-3	400
Cove Non-Linking	2	1	1	-	PC2-1-108-3	600
Cove Non-Linking	2	1	1	1	PC3-1-108-2-3	600
Cove Non-Linking	4	1	1	1	PC4-1-108-2-3	770
Cove Linking	2	-	-	-	PCL-1-3-4	540
Cove Linking	2	1	1	-	PCL2-1-3-4	740
Cove Linking	2	1	1	1	PCL3-1-2-3-4	740
Cove Linking	4	1	1	1	PCL4-1-2-3-4	1,040

4 If ordering linking units, a starter infeed cable is required and ordered separately. If ordering multiple linking units, jumpers come standard, and the lengths are determined by Hi5.

Slick Non-Linking	2	1	1	-	PSLPUL-1-120	450
Slick Linking	2	1	1	-	PSLLPUL-1-12-5	560

5 If ordering linking units, a starter infeed cable is required and ordered separately. If ordering multiple linking units, jumpers come standard, and the lengths are determined by Hi5.

Volt Linking	6	2	-	1	PV-1-2-3-4	3,340
--------------	---	---	---	---	------------	-------

4 If ordering linking units, a starter infeed cable is required and ordered separately. If ordering multiple linking units, jumpers come standard, and the lengths are determined by Hi5.

Zing Non-Linking	2	1	1	-	PZIPUL-1-120	590
Zing Linking	2	1	1	-	PZLPUL-1-12-3-5	810

5 If ordering linking units, a starter infeed cable is required and ordered separately. If ordering multiple linking units, jumpers come standard, and the lengths are determined by Hi5.

PTUCK.W — Tuck Power

Category: Power

- PTUCK.W — Tuck Power w bracket (+\$660/set)

Specifications:

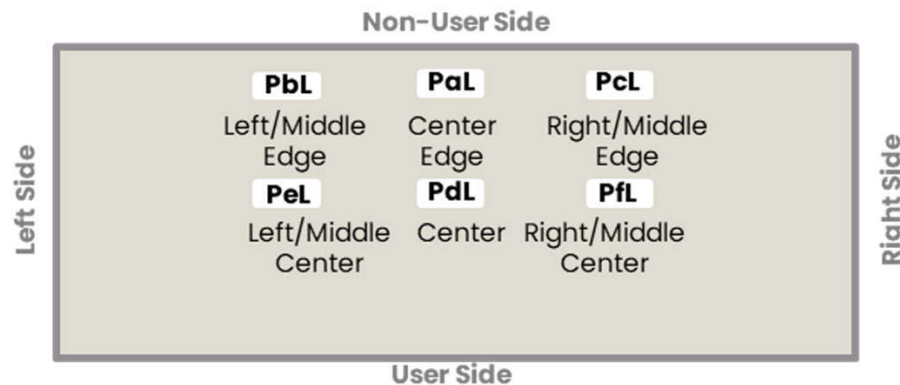
- Size: 8" x 2.32" x 2.35"
- Non-Linking with a 108" cord
- (2) 15 Amp, 120 Volt Tamper Resistant AC Receptacles
- (1) 2.4 Amp USB-A Port
- (1) 60-Watt USB-C Power Delivery Port
- Available in White
- Standard Fabric Cord Length: 10' and 90° Plug with 45° Offset
- Cord comes with Integrated Leather Cable Manager
- Power cords should not be routed in walkways or where subject to damage.
- Tuck Power is standard on Gather Venue TV carts.
- Optional for Gather Provision carts and Convene tables



Power Location Codes

Restrictions: Due to interference between the power box and the table base:

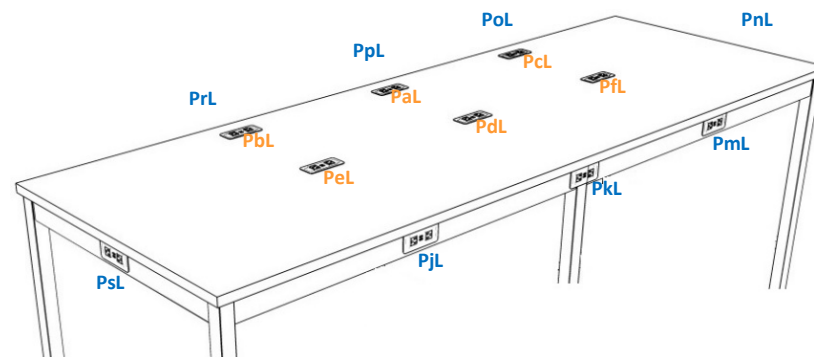
- Power cannot go in PeL, PdL or Pfl on Beam Nesting tables or tables with bases located directly under the power box.



Power locations for Apron in Coby Apron Table:

Restrictions: Due to the power boxes interfering with each other

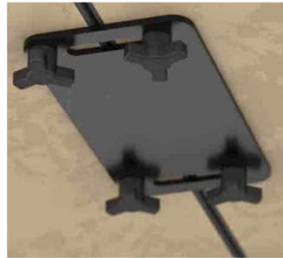
- Cannot have locations PrL and PbL on the same table
- Cannot have locations PaL and PdL on the same table
- Cannot have locations PoL and PcL on the same table



QR — Leveling Table Gangers

Category: Table Connection

- QR — Quick Release Leveling gangers (+\$300/set)



CODE WITH LOCATION

- QR.A — Leveling Table Gangers location A (+\$ 300/table)
- QR.B — Leveling Table Gangers location B (+\$ 300/table)
- QR.C — Leveling Table Gangers location A+B (+\$ 600/table)

Location Code: A=short edges B=Long edges C=Both A+B

Specifications:

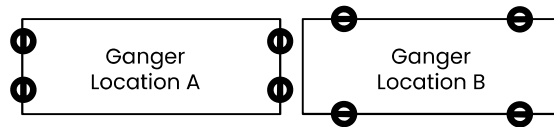
- 3" x 6" x 11GA steel plates
- Adjustable leveling

Installation:

- Inserts factory installed
- Plate field installed

Restrictions:

- Not for knife edge, solid surface or quartz



TG — Table Gangers

Category: Table Connection

- TG — Table Gangers (+\$200/set)



CODE WITH LOCATION

- TG.A — Table Gangers location A (+\$ 200/table)
- TG.B — Table Gangers location B (+\$ 200/table)
- TG.C — Table Gangers location A+B (+\$ 400/table)

Location Code: A=short edges B=Long edges C=Both A+B

Specifications:

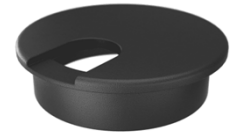
- Simply twist and lock in place.
- Factory installed.

Restrictions:

- Not for knife edge / wood edge
- Not for solid surface or quartz

G (B/S) — Grommet

Category: Cable Management



- GB / GS — Grommet Black/Silver (+\$40/ea)

CODE WITH LOCATION

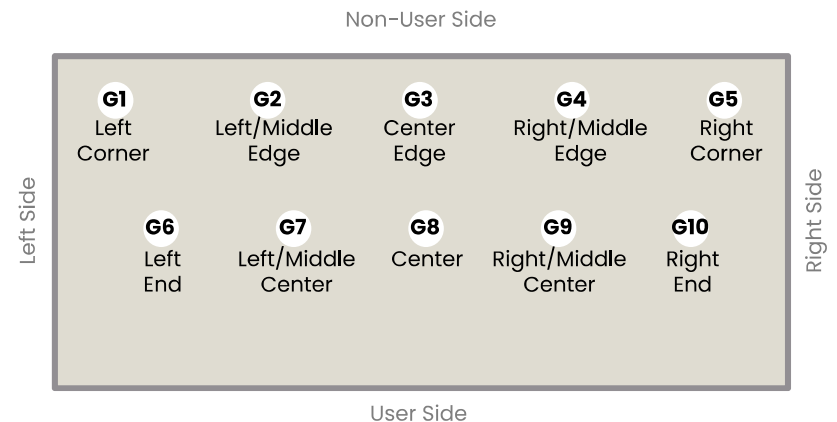
- G1B — Black Grommet. Left Corner non-user side. (+\$ 40/ea)
- G1S — Silver Grommet. Left Corner non-user side. (+\$ 40/ea)
- G2B — Black Grommet. Left / Middle Edge non-user side. (+\$ 40/ea)
- G2S — Silver Grommet. Left / Middle Edge non-user side. (+\$ 40/ea)
- G3B — Black Grommet. Center Edge non-user side. (+\$ 40/ea)
- G3S — Silver Grommet. Center Edge non-user side. (+\$ 40/ea)
- G4B — Black Grommet. Right / Middle Edge non-user side. (+\$ 40/ea)
- G4S — Silver Grommet. Right / Middle Edge non-user side. (+\$ 40/ea)
- G5B — Black Grommet. Right Corner non-user side. (+\$ 40/ea)
- G5S — Silver Grommet. Right Corner non-user side. (+\$ 40/ea)
- G6B — Black Grommet. Left End (+\$ 40/ea)
- G6S — Silver Grommet. Left End (+\$ 40/ea)
- G7B — Black Grommet. Left / Middle Center (+\$ 40/ea)
- G7S — Silver Grommet. Left / Middle Center (+\$ 40/ea)
- G8B — Black Grommet. Center (+\$ 40/ea)
- G8S — Silver Grommet. Center (+\$ 40/ea)
- G9B — Black Grommet. Right / Middle Center (+\$ 40/ea)
- G9S — Silver Grommet. Right / Middle Center (+\$ 40/ea)
- G10B — Black Grommet. Right End (+\$ 40/ea)
- G10S — Silver Grommet. Right End (+\$ 40/ea)

Specifications:

- 3" round plastic grommet
- Factory cut / field installed

Restrictions:

- Power cannot go in G6, G7, G8, G9, G10 on Beam Nesting tables or tables with legs located directly under the power box.



WB — Cable Base with Holes

Category: Cable Management

- WB — Wire manager base with holes (+\$ 100/ea)

Specifications:

- 1.5" x 2.5" openings
- Vertical cable routing

Compatibility: Coby Apron, Coby Post, Supreme, Trestle



WMAG — Magnetic Wire Manager

Category: Cable Management

- WMAG — Magnetic Wire Manager 17"L (+\$100/ea)
- WMAG.15 — Magnetic Wire Manager 15"L (+\$220/ea)
- WMAG.30 — Magnetic Wire Manager 30"L (+\$390/ea)
- WMAG.32 — Magnetic Wire Manager 32"L (+\$420/ea)

Specifications:

- Magnetic 1" x 2" steel channel
- Open slot to accommodate any cable.
- Recommended for square or rectangular bases only



Variants:

- WMAG.15 (15") Compatibility: Convene 29"H, Venue
- WMAG.17 (17") Compatibility: Convene, Coby Post, Empire, Jewel, NIM, ZuZu Tables.
- WMAG.30 (30") Compatibility: Provision
- WMAG.32 (32") Compatibility: Convene Bar Height

Finishes: Matches the table bases.

WLOOP — Loop Clamps

Category: Cable Management

- WLOOP — Loop clamps (+\$20/set)

Specifications:

- Set of 4 cable clamps and screws



WMC2.3 — Snap-On Wire Manager

Category: Cable Management

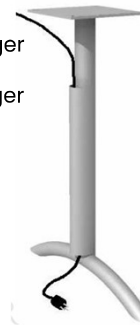
- WMC2.2B — Black Snap on vertical wire manager for T, TT and X4 Gateway bases (+\$ 100/ea)
- WMC2.2S — Silver Snap on vertical wire manager for T, TT and X4 Gateway bases (+\$ 100/ea)

Specifications:

- 17.75" length
- Snap-on steel cover

Compatibility: Gateway

Finishes: Black or Silver



WT — Steel Cable Trough

Category: Cable Management

- WT — Steel Horizontal Wire Trough (+\$500/ea)

Specifications:

- 12" x 34" x 6"
- Steel construction



Compatibility: Due to knee clearance under the tabletop, this option is recommended on 48"W and 60" wide tables

WPP — Powered Island Base

Category: Power Integration

- WPP — Power base pass through (+\$300/ea)

Specifications:

- Internal power housing
- Clearance: 7.5" W x 10" L x 3" H
- Cable exit routing



Compatibility: Round and Square tables with center column

APU — Apron to Accept Power

Category: Power Integration

- APU — Power Apron
Available upon customer request. Price based on length and power requirements

Specifications:

- 3.25" high steel apron beam
- 12GA steel construction
- Designed to house power modules

Compatibility: Union Tables

Finishes: Powder coat (standard)



FA — Floor Anchored Bracket

Category: Safety / Anchoring

- FA — Floor anchor brackets (+\$200/table)
18" wide tables in 36" & 42"H include floor anchors

Specifications:

- Steel bracket for floor anchoring
- Hardware not included

Recommended Use:

- Due to potential tipping hazards, floor anchors are recommended on tables 18" wide and taller than 30"



M2 - PAGODA Pattern

Speedway control tower inspiration
Layered architectural geometry reflecting race control structures. Creates rhythm and visual balance with moderate openness.

Compatibility: Modesty panels for Coby Post, Empire, Gateway, Jewel, NIM, Supreme, and ZuZu Tables

Gather: Home Base, Illustrate, In the Round, Perimeter



Modesty Panel: M2

M3 - TREAD Pattern

Tire performance and grip
Directional pattern inspired by tire tread; communicates motion, traction, and durability with a bold, linear aesthetic.

Compatibility: Modesty panels for Coby Post, Empire, Gateway, Jewel, NIM, Supreme, and ZuZu Tables

Gather: Home Base, Illustrate, In the Round, Perimeter



Modesty Panel: M3

M4 - RACETRACK Pattern

Oval track geometry
Rounded perforations echo continuous track curves. Smooth and flowing, balancing structure with approachability.

Compatibility: Modesty panels for Coby Post, Empire, Gateway, Jewel, NIM, Supreme, and ZuZu Tables

Gather: Home Base, Illustrate, In the Round, Perimeter



Modesty Panel: M4



Jewel
Model: J2 XXXX.M2

In The Round
Model: GRIN2

Home Base
Model: GRHO2



Jewel In The Round
Model: J2 XXXX.M3

Home Base
Model: GRIN3

Model: GRHO3



Jewel
Model: J2 XXXX.M4

In The Round
Model: GRIN4

Home Base
Model: GRHO4



Perimeter
Model: GRPE W2



Illustrate PET Panels
Model: GRIL W2



Perimeter
Model: GRPE W3



Illustrate PET Panels
Model: GRIL W3



Perimeter
Model: GRPE W4



Illustrate PET Panels
Model: GRIL W4

M1 – CROSSING Pattern

Track striping and lane markers
Clean horizontal slot pattern; minimal and modern.
Captures the precision of raceway markings while providing subtle privacy and consistent airflow.



M5 – BRICKYARD Pattern

Historic Indianapolis racing surface
Stacked rectangular pattern referencing the "Yard of Bricks."
Grounded, structured, and heritage-driven.



M6 – FINISH LINE Pattern

Timing marks and race completion
Segmented dash pattern inspired by finish line markings.
Rhythmic and directional, suggesting speed and progression.



LASER-CUT METAL MODESTY PANELS SPECS

Product Overview

Laser-cut metal modesty panels designed to provide privacy, airflow, and visual interest across workstation and table applications. Precision-cut patterns combined with durable powder-coated finishes create a balance of performance and architectural aesthetics.

Compatibility: Modesty panels for Coby Post, Empire, Gateway, NIM, Supreme, and ZuZu Tables

General Specifications

- Material : Cold-rolled steel
- Thickness: 18GA laser-cut patterns
- Deburred edges for safety
- Powder coated
- Undersurface mounted
- Standard Height: 9"

Functionality:

- Seated privacy
- Airflow through perforation
- Cable concealment

Modesty Panels:

- M148 – Crossing 45.5"L (+\$350)
- M160 – Crossing 57.5"L (+\$400)
- M172 – Crossing 69.5"L (+\$450)

- M248 – Pagoda 45.5"L (+\$350)
- M260 – Pagoda 57.5"L (+\$400)
- M272 – Pagoda 69.5"L (+\$450)

- M348 – Tread 45.5"L (+\$350)
- M360 – Tread 57.5"L (+\$400)
- M372 – Tread 69.5"L (+\$450)

- M448 – Racetrack 45.5"L (+\$350)
- M460 – Racetrack 57.5"L (+\$400)
- M472 – Racetrack 69.5"L (+\$450)

- M548 – Brickyard 45.5"L (+\$350)
- M560 – Brickyard 57.5"L (+\$400)
- M572 – Brickyard 69.5"L (+\$450)

- M648 –Finish Line 45.5"L (+\$350)
- M660 –Finish Line 57.5"L (+\$400)
- M672 –Finish Line 69.5"L (+\$450)

- M748 – Chevron 45.5"L (+\$350)
- M760 – Chevron 57.5"L (+\$400)
- M772 – Chevron 69.5"L (+\$450)

- M848 – Baseline 45.5"L (+\$350)
- M860 – Baseline 57.5"L (+\$400)
- M872 – Baseline 69.5"L (+\$450)

- M948 – Lattice 45.5"L (+\$350)
- M960 – Lattice 57.5"L (+\$400)
- M972 – Lattice 69.5"L (+\$450)

- M1048 – Pulse 45.5"L (+\$350)
- M1060 – Pulse 57.5"L (+\$400)
- M1072 – Pulse 69.5"L (+\$450)

NIM nesting table

Modesty Panels:

- M148N – Crossing 38.5"L (+\$350/ea)
- M160N – Crossing 50.5"L (+\$400/ea)
- M172N – Crossing 62.5"L (+\$ 450/ea)

- M248N – Pagoda 38.5"L (+\$350/ea)
- M260N – Pagoda 50.5"L (+\$400/ea)
- M272N – Pagoda 62.5"L (+\$ 450/ea)

- M348N – Tread 38.5"L (+\$350/ea)
- M360N – Tread 50.5"L (+\$400/ea)
- M372N – Tread 62.5"L (+\$ 450/ea)

- M448N – Racetrack 38.5"L (+\$350/ea)
- M460N – Racetrack 50.5"L (+\$400/ea)
- M472N – Racetrack 62.5"L (+\$ 450/ea)

- M548N – Brickyard 38.5"L (+\$350/ea)
- M560N – Brickyard 50.5"L (+\$400/ea)
- M572N – Brickyard 62.5"L (+\$ 450/ea)

- M648N –Finish Line 38.5"L (+\$350/ea)
- M660N –Finish Line 50.5"L (+\$400/ea)
- M672N – Finish Line 62.5"L (+\$ 450/ea)

M7 – CHEVRON

Directional track cues
Classic V-pattern; bold and architectural. Strong directional flow with balanced openness.



M8 – BASELINE

Technical track measurement
Linear, measured geometry; calm and intentional.
Emphasizes precision and control.



M9 – LATTICE

Grandstand structural systems
Open repeating geometry; engineered and lightweight.
Suggests structure with transparency.



M10 – PULSE

Speed and telemetry rhythm
Dynamic, flowing pattern representing motion cadence.
Energetic yet controlled visual movement.



CUP — Swivel Cup Holder

Category: Accessory

- CUP — Swivel Black Cup Holder (+\$100/ea)

Specifications:

- 8" x 5"
- 14GA steel
- 110° swivel
- Supports 2.75" and 3.5" cup sizes
- Not available on round tabletops



Compatibility: Arlington, Jewel, Retha

Installation: Field installed

Finishes: Black only

HOOK — Bag Hook

Category: Accessory

- HOOK — Bag Hook (+\$20/ea)

Specifications:

- 14GA steel
- Load capacity: 100 lbs
- Installation: Field installed



Compatibility: Arlington, Jewel, Retha

Finishes: Black

TAB — Tablet Holder

Category: Accessory

- TABB — Black Tablet Holder (+\$100/ea)
- TABS — Silver Tablet Holder (+\$100/ea)
- TABW — White Tablet Holder (+\$100/ea)

Specifications:

- 6" x 8" x 16GA steel
- Has a 2" flange that screws under the top



Compatibility: Arlington, Jewel, Retha

Finishes: Black, Silver or White

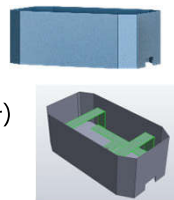
GRPE.H — Perimeter Half Planter Bucket

Category: Planter

- GRPE.H — Perimeter Half Planter Bucket (+\$1,050/ea)

Specifications:

- 8" x 16" (9 lbs./ea)
- Steel bucket
- With plants (includes brackets)
- Without plants (includes magnetic liner)



Compatibility: Perimeter, Venue

Finishes: Powder coat (standard)

GRPE.L — Perimeter Long Planter Bucket

Category: Planter

- GRPE.L — Perimeter Long Planter Bucket (+\$1,300/ea)

Specifications:

- 8" x 33" (16 lbs./ea)
- Steel bucket
- With plants (includes brackets)
- Without plants (includes magnetic liner)



Compatibility: Perimeter, Venue

Finishes: Powder coat (standard)

GRAC1 — Magnetic Holder

Category: Gather Accessory

- GRAC1 — Magnetic Dry Erase Holder (+\$200/ea)
Specify Metal Finish

Specifications:

- Size: 1.6" x 12" x 3"H
- Powder-coated formed metal
- Magnetic backing
- Dry erase markers and eraser not included



Compatibility: Perimeter and Illustrate

Finishes: Powder coat (standard)

GRAC2 — Two-Sided Magnetic Dry Erase Board

Category: Gather Accessory

- GRAC2 — Two-sided whiteboard (+\$175/ea)
Specify PET Finish

Specifications:

- 9" x 12"
- PET board with dry erase laminate
- Dry erase markers and eraser not included



Compatibility: Home Base, In The Round and Provision

Finishes: Multiple PET colors

GRAC3 — Supply Cup

Category: Gather Accessory

- GRAC3 — PET Supply Cup (+\$190/ea)
Specify PET Finish

Specifications:

- 5" x 5" x 6"
- Formed PET



Compatibility: Home Base, In The Round and Provision

Finishes: Multiple PET colors

GRAC4 — Stackable PET Bin

Category: Gather Accessory

- GRAC4 — Stackable PET Bin (+\$570/ea)
Specify PET Finish

Specifications:

- 16" x 19" x 10"
- Formed PET



Compatibility: Home Base, Provision, Venue, Perimeter

Finishes: Multiple PET colors

GRAC5 / GRAC6 / GRAC7 — Coming Soon

Category: Gather Accessories

- GRAC5 — Perimeter Half Magnetic Roll-Up
- GRAC6 — Perimeter/Illustrate Magnetic Roll-Up
- GRAC7 — Illustrate Door Magnetic Roll-Up



Compatibility: Perimeter and Illustrate

REAL PLANTS

Models:

- GR.16Jungle — Real Jungle Plant 16" (+\$1,120/ea)
Used with Perimeter or Venue Half Planter + Atmosphere
- GR.32Jungle — Real Jungle Plant 32" (+\$2,240/ea)
Used with Perimeter or Venue Long Planter

Typical Jungle Plants are standard with a variety of:
Algerian Ivy • Asparagus Fern • Brocade Moss • Cider Gum
Foxtail Millet • Lady Fern • Leather Leaf Fern • Vegetable Lamb



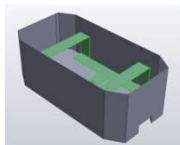
- GR.16Moss — Real Moss Plant 16" (+\$880/ea)
Used with Perimeter or Venue Half Planter + Atmosphere
- GR.32Moss — Real Moss Plant 32" (+\$1,670/ea)
Used with Perimeter or Venue Long Planter Buckets

Typical Moss Plants are standard with a variety of:
Brocade Moss • Chinese Cymbidium • Cider Gum • Green
Trick Dianthus • Himalayan Ivy • Leather Leaf Fern • Lemon
Scented Gum.



Specifications:

- Various plants in all the shades of the lush rainforest set onto a flat moss substrate guarantee a deceptively real jungle feel.
- Preserved natural plants
- Mounted to MDF
- No watering required



Installation

MUST BE HANDLED WITH CARE DURING INSTALLATION

The plants come glued to MDF board. Using the screws provided by Hi5, screw through the plants and MDF board into the metal bracket inside the metal planter bucket.



PLANTS AND MOSSES ARE PRESERVED AFTER HARVEST WITH GLYCERINE AND FOOD COLORING.

1. CULTIVATION

The plants for Hi5's Gather collection are cultivated on certified farms – just like carrots or mushrooms. Appropriate care ensures the best possible conditions to create an optimal harvest.



2. HARVEST

The harvest is done by hand with love and care. Subsequently, the harvested plants are pre-sorted by hand. Only the plants that meet the highest quality standards are later used in processing.

3. PRESERVATION

Natural preservation keeps the plants permanently beautiful and makes them easy to maintain. In an exchange process, the water in the plant is replaced by glycerine and the chlorophyll is replaced by food coloring.



4. PROCESSING

Artistic florists arrange the plants by hand by hot melt glueing the plants to the MDF board. Each plant is a true original.



FREQUENTLY ASKED QUESTIONS

Are the plants real?

Yes, Hi5 only uses real plants, which are preserved with a natural process that uses glycerine and food coloring. As a result, the plants become stable and require no additional care.

How are the plants preserved?

The special preservation method is based on water, food coloring and glycerine or salt and therefore poses no health risks.

Do the plants require care?

No, no care is necessary. On the contrary: the preserved plants should never be watered under any circumstances. They also require no light and because of their antistatic properties, they do not collect dust.
In short: 100% nature. 0% care.

What happens in direct sunlight?

In direct sunlight, some plants may fade after 2 - 3 years.

Where can Hi5 products be placed?

As long as the humidity is under 70%, the plants can be used anywhere indoors. Preserved plants are not suitable for outdoor environments.

Do the plants have an impact on the acoustics of a room?

Yes, they act much like acoustic panels made of soft natural materials and reduce both noise and reverberation in indoor areas.

Do the plants or moss have an odor?

Since they are natural plants, they have the typical, natural odor that dissipates with time.

Do the plant pictures look exactly like they do in the catalog or on the website?

No, not 100%. Firstly, our plants are handcrafted. Secondly, the plants are natural products that may vary in color and form. Each plant is therefore unique.

IS IT POSSIBLE TO REINVIGORATE THE COLOR OF THE PLANTS?

Yes, should the mosses lose their color intensity due to time, high humidity or direct sunlight, you can order a natural after-dye spray from us.

